

Product Information Crawler Excavator

R 936 Compact

Litronic®



Generation

6.1

Engine

255 HP / 190 kW

Tier 4 Final

Operating Weight

34,800 kg / 76,720 lb

Bucket Capacity

0.55 – 2.15 m³ / 0.72 – 2.81 yd³

LIEBHERR

Experience the Progress

R 936 Compact

Maintenance

- Servicing concept, with service points accessible from ground level
- Concept for lateral access to uppercarriage and large maintenance platform
- Engine oil, hydraulic oil, fuel and urea (diesel exhaust fluid) levels visible on the display

Equipment

- Large choice of sticks
- Longer lifespan of components and higher productivity thanks to automatic centralised lubrication system (option)
- Safety check valves for hoist and stick cylinders as standard

Safety

- Panoramic visibility with no obstructions and camera on the rear and the right side for enhanced safety
- Tilttable console for easy and safe access to cab
- ROPS-certified cab structure
- Emergency exit via the rear cab window
- Right window and windshield in laminated and tinted glass





Comfort

- Spacious, air-conditioned work space
- Airsprung seat with vertical and longitudinal suspension
- Easy-to-use high resolution 7" colour touchscreen
- 3" orange seat belt
- New LED lighting as standard

Engine

- New US EPA Tier 4 Final engine
- Automatic engine idling / speed increase, controlled via joystick sensors

Undercarriage

- Robust, reliable X-frame undercarriage, easy to secure thanks to its integrated eyelets
- Easy maintenance
- Maintenance-free travel gear and track rollers with lifetime lubrication for easy maintenance
- Extra storage as an option

Technical Data



Engine

Rating	
per SAE J1349	255 HP (190 kW) at 1,800 rpm
per ISO 9249	258 HP (190 kW) at 1,800 rpm
Torque	1,337 Nm at 1,350 rpm / 986 lbf ft at 1,350 rpm
Model	Liebherr D944 A7-24
Type	4 cylinder in-line
Bore	130 mm / 5.1 in
Stroke	150 mm / 5.9 in
Displacement	8.0 l / 488 in³
Engine operation	4-stroke diesel Common-Rail Turbo-charged and after-cooler
Exhaust gas treatment	Tier 4 Final SCR Filter Passive regeneration by thermo management
Cooling system	Water-cooled and oil cooler, after-cooled and fuel cooled
Air cleaner	Dry-type air cleaner with pre-cleaner
Fuel tank	450 l / 119 gal
Urea tank	46 l / 12 gal
Electrical system	
Voltage	24 V
Batteries	2 x 180 Ah / 12 V
Alternator	Three-phase current 28 V / 140 A
Engine idling	Sensor controlled



Hydraulic Controls

Power distribution	Via control valves with integrated safety valves, simultaneous and independent actuation of undercarriage, swing drive and equipment
Servo circuit	
Equipment and swing	Proportional via joystick levers
Travel	- Proportional control via foot pedals or removable levers - Speed pre-selection
Additional functions	Proportional regulation via foot pedals or mini-joystick



Hydraulic System

Hydraulic system	Positive Control hydraulic system. Demand-based, double independent pump flows Features high system dynamics and sensitivity provided by integrated system controlling
Hydraulic pump	
For equipment and travel drive	Liebherr, variable displacement, swashplate double pump
Max. flow	2 x 245 l/min. / 2 x 65 gpm
Max. pressure	380 bar / 5,511 psi
Pump management	Electronic pump management via the integrated system controlling (CAN-BUS) synchronous to the control block. Open circuit for the rotation
Hydraulic tank	290 l / 77 gal
Hydraulic system	max. 520 l / max. 137 gal
Hydraulic oil filter	1 main return filter with integrated partial micro filtration (10 µm / 1,250 mesh)
Cooling system	Compact cooler, consisting of a water cooler, with hydraulic oil cooler, gearbox oil cooler, fuel cooler and after-cooler cores and hydrostatically driven fan
MODE selection	Adjustment of engine and hydraulic performance via a mode pre-selector to match application, e.g. for especially economical and environmentally friendly operation or for maximum digging performance and heavy-duty jobs
Engine speed and performance setting	Stepless adjustment of engine output and hydraulic power via engine speed



Swing Drive

Drive	Liebherr swashplate motor with integrated brake valve and torque control
Transmission	Liebherr compact planetary reduction gears
Swing ring	Liebherr, sealed race ball bearing swing ring, internal teeth
Swing speed	0 – 10.0 rpm stepless
Swing torque	106 kNm / 78,182 lbf ft
Holding brake	Wet multi-disc (spring applied, pressure released)



Operator's Cab

Cab	ROPS safety cab structure (roll-over protection system according to ISO 12117-2:2008) with windscreen, totally or partially retractable (only upper part), under cab roof, LED work headlights integrated in the ceiling, a door with a sliding window (can be opened on both sides), large stowing box and several stowing possibilities, shock-absorbing suspension, laminated right hand side and roof windows, all windows tinted, separate extendible window shades for the sunroof window and windscreen, cigarette lighter and 24 V plug, 12 V plug, cup holder
Operator's seat	Liebherr-Comfort seat, airsprung with automatic weight adjustment, vertical and longitudinal seat damping including consoles and joysticks. Seat and armrests adjustable separately and in combination (adjustable in width, height and inclination), seat heating as standard
Arm consoles	Oscillating consoles with seat, tiltable console left
Operation and displays	Large high-resolution operating unit, intuitive, color display with touchscreen, video-compatible, numerous setting, control and monitoring options, e.g. air conditioning control, fuel consumption, machine and attachment parameters
Air-conditioning	Automatic air-conditioning, recirculated air function, fast de-icing and demisting at the press of a button, air vents can be operated via a menu. Recirculated air and fresh air filters can be easily replaced and are accessible from the outside. Heating-cooling unit, designed for extreme outside temperatures, sensors for solar radiation, inside and outside temperatures
Noise emission	
ISO 6396	L_{pA} (inside cab) = 71 dB(A)
2000/14/EC	L_{WA} (surround noise) = 105 dB(A)



Undercarriage

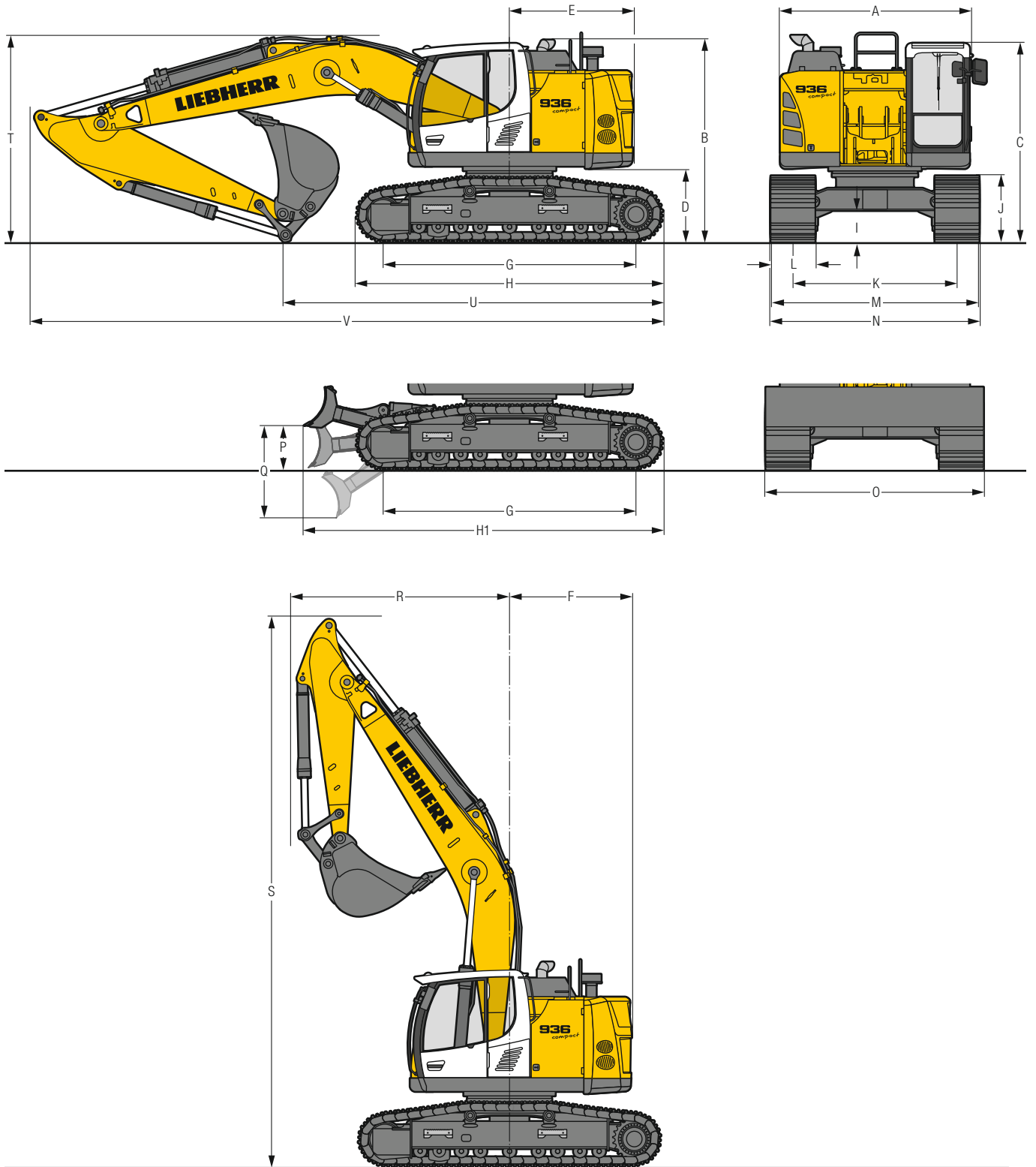
LC	Gauge 2,740 mm / 9'
Drive	Liebherr swashplate motor with brake valves on both sides
Transmission	Liebherr compact planetary reduction gear
Maximum travel speed	Low range 2.6 km/h / 1.6 mph High range 4.2 km/h / 2.6 mph
Drawbar pull on crawler	325 kN / 73,060 lbf
Track components	D7, maintenance-free
Track rollers / Carrier rollers	9/2
Tracks	Sealed and greased
Track pads	Triple grouser
Holding brake	Wet multi-disc (spring applied, pressure released)
Brake valves	Integrated into travel motor
Lashing eyes	Integrated



Equipment

Hydraulic cylinders	Liebherr cylinders with seal and guidance systems and shock protection
Bearings	Sealed, low maintenance
Lubrication	Liebherr central lubrication system

Dimensions



	LC	mm/ft in				LC with blade	mm/ft in
A	Upper-carriage width	3,000** / 9'10***					3,000** / 9'10***
B	Upper-carriage height	3,200 / 10' 6"					3,200 / 10' 6"
C	Cab height	3,155 / 10' 4"					3,155 / 10' 4"
D	Counterweight ground clearance	1,160 / 3'10"					1,160 / 3'10"
E	Rear-end length	1,975 / 6' 6"					1,975 / 6' 6"
F	Tail swing radius	1,975 / 6' 6"					1,975 / 6' 6"
G	Wheelbase	3,990 / 13' 1"					3,990 / 13' 1"
H	Undercarriage length	4,845 / 15'11"					4,845 / 15'11"
H1	Undercarriage length with blade	-					5,600 / 18' 4"
I	Undercarriage ground clearance	500 / 1' 8"					500 / 1' 8"
J	Track height	1,055 / 3' 6"					1,055 / 3' 6"
K	Track gauge	2,740 / 9'					2,740 / 9'
L	Track pad width	600 / 24"	700 / 28"	800 / 31"	900 / 35"		600 / 24"
M	Width over tracks	3,340 / 10'11"	3,440 / 11' 3"	3,540 / 11' 7"	3,640 / 11'11"		3,340 / 10'11"
N	Width over steps	3,340 / 10'11"	3,340 / 10'11"	3,540 / 11' 7"	3,540 / 11' 7"		3,340 / 10'11"
O	Blade width	-					3,350 / 11'
P	Max. blade height	-					705 / 2' 4"
Q	Max. blade depth	-					1,460 / 4' 9"

* width with removable steps

** without door stop device and spacer

	Stick length m/ft in	Mono boom 6.20 m/20'4" direct mounting mm/ft in
R	Front swing radius	2.50 / 8'2" 3,200 / 10'6" 3,70 / 12'2"
S	Height with boom up	3,500 / 11' 6" 3,500 / 11' 6" 8,800 / 28'10"
T	Boom height	2.50 / 8'2" 3,200 / 10'6" 3,70 / 12'2" 3,150 / 10' 4"
U	Length on ground	2.50 / 8'2" 3,200 / 10'6" 6,000 / 19' 8" 3,70 / 12'2" 5,300 / 17' 5" / 5,200* / 17'1"***
V	Overall length	2.50 / 8'2" 3,200 / 10'6" 10,000 / 32'10" / 10,800* / 35'5"*** 10,000 / 32'10" / 10,800* / 35'5"*** 3,70 / 12'2" 10,000 / 32'10" / 10,800* / 35'5"***
	Bucket	1.60 m³ / 2.09 yd³

* with blade

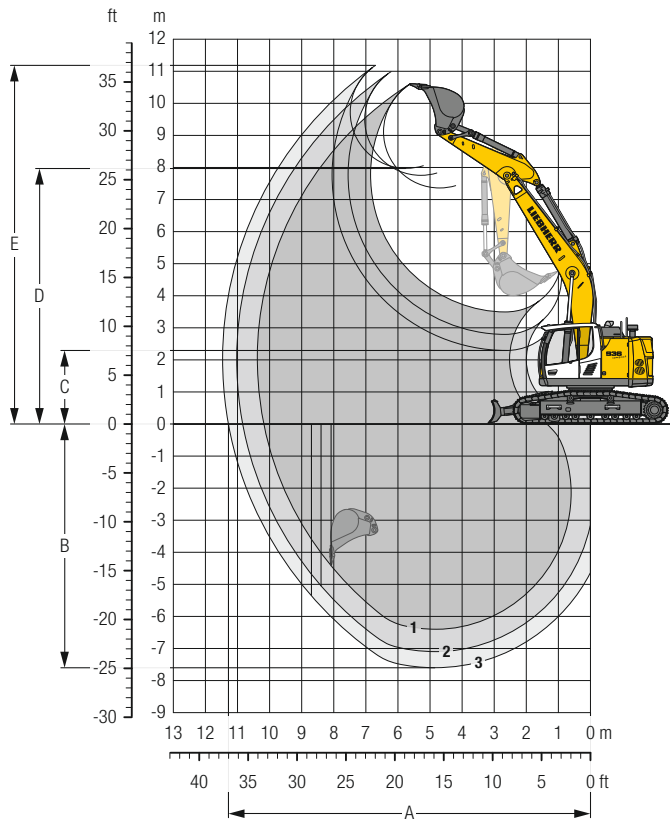
Transport Dimensions

removable elements disassembled

	Undercarriage/ Stick m/ft in	Mono boom 6.20 m/20'4" mm/ft in			
		600 / 24"	700 / 28"	800 / 31"	900 / 35"
Pad width		600 / 24"	700 / 28"	800 / 31"	900 / 35"
Transport width	LC	3,340 / 10'11"	3,440 / 11' 3"	3,540 / 11' 7"	3,640 / 11'11"
	LC with blade	3,340 / 10'11"	-	-	-
		LC		LC with blade	
Transport length	2.50 / 8'2"	10,000 / 32'10"		10,800 / 35'5"	
	3.20 / 10'6"	10,000 / 32'10"		10,800 / 35'5"	
	3.70 / 12'2"	10,000 / 32'10"		10,800 / 35'5"	
Transport height	2.50 / 8'2"	3,200 / 10'6"		3,200 / 10'6"	
	3.20 / 10'6"	3,250 / 10'8"		3,250 / 10'8"	
	3.70 / 12'2"	3,200 / 10'6"		3,200 / 10'6"	
Bucket		1.60 m³ / 2.09 yd³			

Backhoe Bucket

with Mono Boom 6.20 m/20'4" and Counterweight 8.0 t/17,640 lb



Digging Envelope

without quick coupler		1	2	3
Stick length	m/ft in	2.50/8'2"	3.20/10'6"	3.70/12'2"
A Max. reach at ground level	m/ft in	10.18/33'5"	10.84/35'7"	11.28/37'
B Max. digging depth	m/ft in	6.40/21'	7.10/23'4"	7.60/24'11"
C Min. dumping height	m/ft in	3.49/11'5"	2.79/9'2"	2.29/7'6"
D Max. dumping height	m/ft in	7.36/24'2"	7.75/25'5"	7.97/26'2"
E Max. cutting height	m/ft in	10.59/34'9"	10.96/35'11"	11.18/36'8"

Forces

without quick coupler		1	2	3
Stick digging force (ISO 6015)	kN/lbf	168/37,770	142/31,920	128/28,780
Bucket digging force (ISO 6015)	kN/lbf	204/45,860	204/45,860	204/45,860
Stick digging force (SAE J1179)	kN/lbf	160/35,970	136/30,570	123/27,650
Bucket digging force (SAE J1179)	kN/lbf	178/40,020	178/40,020	178/40,020

Operating Weight and Ground Pressure

The operating weight includes the basic machine with counterweight 8.0 t/17,640 lb, mono boom 6.20 m/20'4", stick 3.20 m/10'6" and bucket 1.60 m³/2.09 yd³ (1,110 kg/2,430 lb).

Undercarriage		LC			
Pad width	mm/in	600/24"	700/28"	800/31"	900/35"
Weight	kg/lb	33,750/74,410	34,100/75,180	34,450/75,950	34,800/76,720
Ground pressure	kg/cm ² /psi	0.66/9.4	0.57/8.1	0.50/7.1	0.45/6.4

Undercarriage		LC with blade			
Pad width	mm/in	600/24"	700/28"	800/31"	900/35"
Weight	kg/lb	36,150/79,700	36,500/80,470	36,850/81,240	37,200/82,010
Ground pressure	kg/cm ² /psi	0.70/10.0	0.61/8.7	0.54/7.7	0.48/6.8

Buckets Machine stability per ISO 10567* (75% of tipping capacity)

	Cutting width mm in	Capacity ISO 7451 m ³ yd ³	Weight ¹⁾ kg lb	Weight ⁴⁾ kg lb	LC-Undercarriage (with track pads 800 mm/31")					
					Stick length (m/ft in)					
					without quick coupler			with quick coupler		
	2.50 8'2"	3.20 10'6"	3.70 12'2"	2.50 8'2"	3.20 10'6"	3.70 12'2"				
STD ¹⁾	650 26"	0.55 0.72	810 1,790	820 1,810	▲	▲	▲	▲	▲	▲
	1,050 41"	1.00 1.31	870 1,920	930 2,050	▲	▲	▲	▲	▲	▲
	1,250 49"	1.25 1.63	1,000 2,210	1,050 2,320	▲	▲	▲	▲	▲	▲
	1,400 55"	1.45 1.90	1,070 2,360	1,130 2,490	▲	▲	▲	▲	▲	■
	1,550 61"	1.60 2.09	1,110 2,450	1,170 2,580	▲	▲	■	▲	■	▲
	1,650 65"	1.75 2.29	1,160 2,560	1,220 2,690	▲	■	▲	▲	▲	■
	1,550 61"	1.85 2.42	1,170 2,580	1,230 2,710	▲	▲	■	■	■	△
	1,650 65"	2.00 2.62	1,210 2,670	1,270 2,800	■	■	△	■	■	△
	1,750 69"	2.15 2.81	1,260 2,780	1,320 2,910	▲	■	△	▲	△	△
	1,750 69"	2.15 2.81	1,450 3,200	1,510 3,330	▲	△	△	■	△	-
HD ²⁾	650 26"	0.55 0.72	940 2,070	960 2,120	▲	▲	▲	▲	▲	▲
	1,050 41"	1.00 1.31	1,000 2,210	1,050 2,320	▲	▲	▲	▲	▲	▲
	1,250 49"	1.25 1.63	1,140 2,510	1,200 2,650	▲	▲	▲	▲	▲	▲
	1,400 55"	1.45 1.90	1,230 2,710	1,290 2,840	▲	▲	■	▲	▲	■
	1,550 61"	1.60 2.09	1,290 2,840	1,350 2,980	▲	■	▲	▲	■	■
	1,650 65"	1.75 2.29	1,350 2,980	1,410 3,110	▲	▲	■	■	▲	△
	1,550 61"	1.85 2.42	1,340 2,950	1,400 3,090	▲	▲	■	■	■	△
	1,650 65"	2.00 2.62	1,400 3,090	1,460 3,220	■	■	△	▲	△	△
	1,750 69"	2.15 2.81	1,450 3,200	1,510 3,330	▲	△	△	■	△	-
	1,750 69"	2.15 2.81	1,450 3,200	1,510 3,330	▲	△	△	■	△	-

* Indicated loads are based on ISO 10567, at maximum reach, and may be swung 360° on firm and even ground

¹⁾ Standard bucket with teeth Z 50

²⁾ HD bucket with teeth Z 50

³⁾ Bucket for direct mounting

⁴⁾ Bucket for mounting to quick coupler

Other buckets available upon request

Max. material weight ▲ = ≤ 2.0 t/m³/3,400 lb/yd³, ■ = ≤ 1.8 t/m³/3,000 lb/yd³, ▲ = ≤ 1.65 t/m³/2,800 lb/yd³, ■ = ≤ 1.5 t/m³/2,500 lb/yd³, △ = ≤ 1.2 t/m³/2,000 lb/yd³, - = not authorized

Lift Capacities

with Mono Boom 6.20 m / 20'4", Counterweight 8.0 t / 17,640 lb and Track Pads 800 mm / 31"

Stick 2.50 m / 8'2"

Under-carriage	Height	3.0 m / 10 ft		4.5 m / 15 ft		6.0 m / 20 ft		7.5 m / 25 ft		9.0 m / 30 ft		m	ft in	
		Can be slewed through 360°	In longitudinal position of undercarriage	Can be slewed through 360°	In longitudinal position of undercarriage	Can be slewed through 360°	In longitudinal position of undercarriage	Can be slewed through 360°	In longitudinal position of undercarriage	Can be slewed through 360°	In longitudinal position of undercarriage			
LC	9.0 m t											9.6*	9.6*	4.9
	30 ft lb													
	7.5 m t					8.4	9.6*					7.1	8.4*	6.6
	25 ft lb					17.9	21.2*					16.1	18.7*	21.4*
	6.0 m t			11.7*	11.7*	8.2	9.9*					5.5	8.1*	7.6
	20 ft lb			25.3*	25.3*	17.7	21.6*					12.4	17.8*	24.10"
	4.5 m t			12.2	13.9*	7.8	10.8*		5.6	8.3		4.8	7.1	8.3
	15 ft lb			26.3	29.8*	16.9	23.4*		12.0	17.8		10.6	15.7	27*
	3.0 m t			11.2	16.2*	7.4	11.4		5.4	8.1		4.4	6.6	8.6
	10 ft lb			24.1	35.0*	16.0	24.5		11.6	17.4		9.8	14.6	28.1"
	1.5 m t			10.6	13.0*	7.1	11.0		5.2	7.9		4.3	6.4	8.6
	5 ft lb			22.7	32.1*	15.3	23.6		11.2	17.0		9.5	14.2	28.4"
	0 m t			10.4	16.4*	6.9	10.8		5.1	7.8		4.4	6.6	8.4
	0 ft lb			22.4	35.6*	14.8	23.2		11.0	16.7		9.7	14.7	27.6"
	-1.5 m t	10.9*	10.9*	10.4	14.7*	6.8	10.7		5.1	7.8		4.8	7.3	7.9
-5 ft lb	25.0*	25.0*	22.5	32.0*	14.8	23.1		11.0	16.7		10.6	16.1	25.8"	
-3.0 m t	13.8*	13.8*	10.6	12.0*	7.0	9.5*					5.8	7.6*	7.0	
-10 ft lb	30.0*	30.0*	22.9	26.0*	15.1	20.3*					12.8	16.6*	22.8"	
-4.5 m t			7.5*	7.5*							5.8*	5.8*	5.5	
-15 ft lb			15.6*	15.6*							12.6*	12.6*	17.8"	


Stick 3.20 m / 10'6"

Under-carriage	Height	3.0 m / 10 ft		4.5 m / 15 ft		6.0 m / 20 ft		7.5 m / 25 ft		9.0 m / 30 ft		m	ft in		
		Can be slewed through 360°	In longitudinal position of undercarriage	Can be slewed through 360°	In longitudinal position of undercarriage	Can be slewed through 360°	In longitudinal position of undercarriage	Can be slewed through 360°	In longitudinal position of undercarriage	Can be slewed through 360°	In longitudinal position of undercarriage				
LC	9.0 m t											7.0*	7.0*	6.0	
	30 ft lb											15.7*	15.7*	19'	
	7.5 m t					8.5	8.6*					5.9	6.3*	7.4	
	25 ft lb					18.3	18.7*					13.3	14.1*	24'	
	6.0 m t			11.7*	11.7*	8.3	9.0*			5.8	8.2*		4.8	6.1*	8.4
	20 ft lb			25.3*	25.3*	18.0	19.6*			12.4	18.0*		10.7	13.5*	27.2"
	4.5 m t			18.2*	18.2*	12.4*	12.4*		8.0	10.0*		5.6	8.3		
	15 ft lb			38.7*	38.7*	26.8*	26.8*		17.2	21.6*		12.1	17.9		
	3.0 m t					11.5	15.0*		7.5	11.1*		5.4	8.1	4.1	6.1
	10 ft lb					24.7	32.4*		16.1	24.1*		11.6	17.4	8.8	13.1
	1.5 m t					10.6	16.7*		7.1	11.0		5.2	7.8	4.0	6.0
	5 ft lb					22.9	36.1*		15.2	23.7		11.1	16.9	8.5	12.9
	0 m t					10.3	16.8*		6.8	10.7		5.0	7.7	3.9	5.9
	0 ft lb					22.1	36.4*		14.7	23.0		10.8	16.5		
	-1.5 m t	10.4*	10.4*	10.2	15.6*	6.7	10.6		4.9	7.6		4.2	6.3	8.6	
-5 ft lb	23.6*	23.6*	22.0	34.0*	14.4	22.8		10.7	16.4		9.2	14.0	28'		
-3.0 m t	17.1*	17.1*	10.3	13.5*	6.7	10.4*		5.0	7.7		4.8	7.3*	7.7		
-10 ft lb	37.3*	37.3*	22.3	29.2*	14.6	22.5*		10.8	16.5*		10.7	16.0*	25.4"		
-4.5 m t			11.9*	11.9*	9.9*	9.9*		7.0	7.4*		6.3	6.4*	6.5		
-15 ft lb			25.5*	25.5*	21.0*	21.0*		15.1	15.4*		13.9*	13.9*	21'		

Height Can be slewed through 360° In longitudinal position of undercarriage Max. reach * Limited by hydr. capacity

The load values are quoted in tons (t) / lb x 1,000 at stick end (without bucket), and may be swung 360° on firm and even ground. Adjacent values are valid for the undercarriage when in the longitudinal position. Capacities are valid for 800 mm / 31" wide track pads. Indicated loads are based on ISO 10567 standard and do not exceed 75% of tipping or 87% of hydraulic capacity (indicated via *). Without bucket cylinder, link and lever the lift capacities will increase by 410 kg / 900 lb. Lifting capacity of the excavator is limited by machine stability and hydraulic capacity.

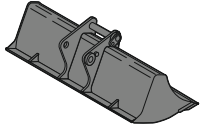
Stick 3.70 m / 12'2"

Under-carriage	↕	3.0 m 10 ft		4.5 m 15 ft		6.0 m 20 ft		7.5 m 25 ft		9.0 m 30 ft					
		t	lb	t	lb	t	lb	t	lb	t	lb	m	ft	in	
LC	9.0 m	t										5.8*	5.8*	6.6	
	30 ft	lb				14,7*	14,7*					12,9*	12,9*	21'4"	
	7.5 m	t						5.9	6.5*			5.3	5.3*	8.0	
	25 ft	lb						12,7	13,4*			11,8*	11,8*	25'11"	
	6.0 m	t				7.7*	7.7*	5.9	7.5*			4.4	5.1*	8.8	
	20 ft	lb				16,9*	16,9*	12,6	16,3*			9,8	11,3*	28'10"	
	4.5 m	t		10.0*	10.0*	8.1	9.4*	5.7	8.2*	4.2	6.2	3.9	5.2*	9.4	
	15 ft	lb		21,3*	21,3*	17,4	20,3*	12,2	17,8*	9,0	13,4	8,6	11,4*	30'8"	
	3.0 m	t		11.7	14.1*	7.6	10.6*	5.4	8.1	4.1	6.1	3.6	5.3*	9.7	
	10 ft	lb		25,3	30,4*	16,3	23,0*	11,7	17,5	8,8	13,1	8,0	11,7*	31'8"	
	1.5 m	t		10.8	16.2*	7.1	11.1	5.2	7.8	3.9	6.0	3.5	5.3	9.7	
	5 ft	lb		23,3	35,0*	15,3	23,8	11,1	16,9	8,5	12,8	7,8	11,7	31'10"	
	0 m	t	6.1*	6.1*	10.3	16.8*	6.8	10.7	5.0	7.6	3.8	5.9	3.6	5.4	9.5
	0 ft	lb	13,9*	13,9*	22,1	36,4*	14,6	23,0	10,7	16,4	8,3	12,6	7,9	12,0	31'1"
	-1.5 m	t	10.1*	10.1*	10.1	16.1*	6.6	10.5	4.9	7.5	3.8	5.8	3.8	5.8	9.0
-5 ft	lb	22,9*	22,9*	21,8	35,0*	14,3	22,6	10,5	16,2			8,4	12,8	29'7"	
-3.0 m	t	15.4*	15.4*	10.2	14.3*	6.6	10.5	4.9	7.5			4.3	6.6	8.3	
-10 ft	lb	34,9*	34,9*	21,9	31,0*	14,3	22,6	10,5	16,3			9,6	14,6	27'	
-4.5 m	t	14.5*	14.5*	10.4	11.3*	6.8	8.6*					5.4	6.5*	7.1	
-15 ft	lb	31,0*	31,0*	22,5	24,1*	14,7	18,2*					12,2	14,3*	23'1"	
LC Blade up	9.0 m	t										5.8*	5.8*	6.6	
	30 ft	lb				14,7*	14,7*					12,9*	12,9*	21'4"	
	7.5 m	t						6.4	6.5*			5.3*	5.3*	8.0	
	25 ft	lb						13,4*	13,4*			11,8*	11,8*	25'11"	
	6.0 m	t				7.7*	7.7*	6.3	7.5*			4.7	5.1*	8.8	
	20 ft	lb				16,9*	16,9*	13,5	16,3*			10,6	11,3*	28'10"	
	4.5 m	t		10.0*	10.0*	8.7	9.4*	6.1	8.2*	4.5	6.3	4.2	5.2*	9.4	
	15 ft	lb		21,3*	21,3*	18,7	20,3*	13,1	17,8*	9,7	13,4*	9,4	11,4*	30'8"	
	3.0 m	t		12.6	14.1*	8.2	10.6*	5.8	8.2	4.4	6.1	3.9	5.3*	9.7	
	10 ft	lb		27,2	30,4*	17,6	23,0*	12,6	17,5	9,5	13,2	8,7	11,7*	31'8"	
	1.5 m	t		11.7	16.2*	7.7	11.1	5.6	7.9	4.3	6.0	3.8	5.3	9.7	
	5 ft	lb		25,1	35,0*	16,6	23,9	12,1	17,0	9,2	12,9	8,5	11,8	31'10"	
	0 m	t	6.1*	6.1*	11.2	16.8*	7.4	10.7	5.4	7.7	4.2	5.9	3.9	5.5	9.5
	0 ft	lb	13,9*	13,9*	24,0	36,4*	15,9	23,1	11,7	16,5	9,0	12,7	8,6	12,0	31'1"
	-1.5 m	t	10.1*	10.1*	11.0	16.1*	7.2	10.6	5.3	7.6	4.2	5.9	4.1	5.8	9.0
-5 ft	lb	22,9*	22,9*	23,7	35,0*	15,6	22,7	11,4	16,3			9,2	12,9	29'7"	
-3.0 m	t	15.4*	15.4*	11.1	14.3*	7.2	10.6	5.3	7.6			4.7	6.6	8.3	
-10 ft	lb	34,9*	34,9*	23,8	31,0*	15,6	22,7	11,5	16,3			10,4	14,7	27'	
-4.5 m	t	14.5*	14.5*	11.3*	11.3*	7.4	8.6*					5.9	6.5*	7.1	
-15 ft	lb	31,0*	31,0*	24,1*	24,1*	15,9	18,2*					13,2	14,3*	23'1"	
LC Blade down	9.0 m	t										5.8*	5.8*	6.6	
	30 ft	lb				14,7*	14,7*					12,9*	12,9*	21'4"	
	7.5 m	t						6.5*	6.5*			5.3*	5.3*	8.0	
	25 ft	lb						13,4*	13,4*			11,8*	11,8*	25'11"	
	6.0 m	t				7.7*	7.7*	6.5	7.5*			4.9	5.1*	8.8	
	20 ft	lb				16,9*	16,9*	14,0	16,3*			11,0	11,3*	28'10"	
	4.5 m	t		10.0*	10.0*	9.0	9.4*	6.3	8.2*	4.7	6.6*	4.4	5.2*	9.4	
	15 ft	lb		21,3*	21,3*	19,4	20,3*	13,6	17,8*	10,1	13,4*	9,7	11,4*	30'8"	
	3.0 m	t		13.2	14.1*	8.5	10.6*	6.1	8.8*	4.6	7.7*	4.1	5.3*	9.7	
	10 ft	lb		28,4	30,4*	18,3	23,0*	13,1	19,1*	9,9	16,5*	9,1	11,7*	31'8"	
	1.5 m	t		12.2	16.2*	8.0	11.7*	5.8	9.4*	4.5	7.9*	4.0	5.7*	9.7	
	5 ft	lb		26,3	35,0*	17,3	25,4*	12,6	20,3*	9,6	17,1*	8,8	12,5*	31'10"	
	0 m	t	6.1*	6.1*	11.7	16.8*	7.7	12.3*	5.6	9.6*	4.4	7.8*	4.1	6.3*	9.5
	0 ft	lb	13,9*	13,9*	25,2	36,4*	16,6	26,6*	12,2	20,9*	9,4	17,0*	9,0	13,8*	31'1"
	-1.5 m	t	10.1*	10.1*	11.5	16.1*	7.5	12.0*	5.5	9.4*	4.3	7.3*	4.3	7.2*	9.0
-5 ft	lb	22,9*	22,9*	24,8	35,0*	16,2	26,1*	11,9	20,3*			9,5	16,0*	29'7"	
-3.0 m	t	15.4*	15.4*	11.6	14.3*	7.5	10.9*	5.5	8.4*			4.9	7.1*	8.3	
-10 ft	lb	34,9*	34,9*	25,0	31,0*	16,3	23,6*	12,0	18,0*			10,9	15,6*	27'	
-4.5 m	t	14.5*	14.5*	11.3*	11.3*	7.7	8.6*					6.1	6.5*	7.1	
-15 ft	lb	31,0*	31,0*	24,1*	24,1*	16,6	18,2*					13,8	14,3*	23'1"	

↕ Height  Can be slewed through 360°  In longitudinal position of undercarriage  Max. reach * Limited by hydr. capacity

The load values are quoted in tons (t) / lb x 1,000 at stick end (without bucket), and may be swung 360° on firm and even ground. Adjacent values are valid for the undercarriage when in the longitudinal position. Capacities are valid for 800 mm / 31" wide track pads. Indicated loads are based on ISO 10567 standard and do not exceed 75% of tipping or 87% of hydraulic capacity (indicated via *). Without bucket cylinder, link and lever the lift capacities will increase by 410 kg / 900 lb. Lifting capacity of the excavator is limited by machine stability and hydraulic capacity.

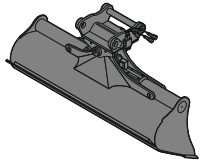
Available Attachments



Rigid Ditch Cleaning Bucket

GRL 100, for mounting to quick coupler SWA 66

Cutting width	mm/in	2,000/79"	2,400/95"	2,400/95"
Capacity	m ³ /yd ³	0.70/0.92	0.85/1.11	1.25/1.63
Weight	kg/lb	546/1,200	635/1,400	685/1,510



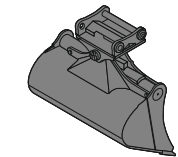
Tiltable Ditch Cleaning Bucket

GRL 100, 2 x 50° tiltable, for direct mounting

Cutting width	mm/in	2,000/79"	2,000/79"	2,200/87"	2,400/95"	2,400/95"
Capacity	m ³ /yd ³	1.20/1.57	1.45/1.90	1.65/2.16	0.85/1.11	1.45/1.90
Weight	kg/lb	1,520/3,350	1,600/3,530	1,680/3,700	1,475/3,250	1,620/3,570

GRL 100, 2 x 50° tiltable, for mounting to quick coupler SWA 66

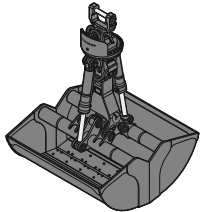
Cutting width	mm/in	2,000/79"	2,000/79"	2,200/87"	2,400/95"	2,400/95"
Capacity	m ³ /yd ³	1.20/1.57	1.45/1.90	1.65/2.16	0.85/1.11	1.45/1.90
Weight	kg/lb	1,520/3,350	1,600/3,530	1,680/3,700	1,475/3,250	1,620/3,570



Tilt Bucket

SL 100, 2 x 50° tiltable, for mounting to quick coupler SWA 66

Cutting width	mm/in	1,600/63"	1,600/63"	1,700/67"	1,800/71"
Capacity	m ³ /yd ³	1.45/1.90	1.75/2.29	1.85/2.42	1.60/2.09
Weight	kg/lb	1,520/3,350	1,635/3,610	1,695/3,740	1,620/3,570
HD-version				X	



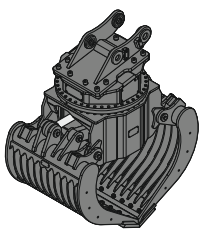
Clamshells

GMZ 30, earthmoving shell, for mounting to quick coupler SWA 48

Cutting width	mm/in	600/24"	800/31"	1,000/39"
Capacity	m ³ /yd ³	0.38/0.50	0.52/0.68	0.65/0.85
Weight	kg/lb	1,025/2,260	1,110/2,450	1,190/2,620

GMZ 80, earthmoving shell, for mounting to quick coupler SWA 66

Cutting width	mm/in	1,200/47"	1,400/55"	
Capacity	m ³ /yd ³	1.40/1.83	1.60/2.09	
Weight	kg/lb	2,376/5,240	2,486/5,480	



Sorting Grab

		perforated		ribbed		closed		stone tong		
SG 30, for direct mounting										
Cutting width	mm/in	1,000/39"	1,200/47"	1,400/55"	1,000/39"	1,200/47"	1,400/55"	1,000/39"	1,200/47"	1,400/55"
Capacity	m ³ /yd ³	0.85/1.11	1.00/1.31	1.15/1.50	0.75/0.98	0.90/1.18	1.05/1.37	0.85/1.11	1.00/1.31	1.15/1.50
Weight	kg/lb	1,700/3,750	1,570/3,460	1,850/4,080	1,775/3,910	1,885/4,160	1,990/4,390	1,730/3,810	1,810/3,990	1,890/4,170
SG 30, for mounting to quick coupler SWA 48										
Cutting width	mm/in	1,000/39"	1,200/47"	1,400/55"	1,000/39"	1,200/47"	1,400/55"	1,000/39"	1,200/47"	1,400/55"
Capacity	m ³ /yd ³	0.85/1.11	1.00/1.31	1.15/1.50	0.75/0.98	0.90/1.18	1.05/1.37	0.85/1.11	1.00/1.31	1.15/1.50
Weight	kg/lb	1,700/3,750	1,570/3,460	1,850/4,080	1,775/3,910	1,885/4,160	1,990/4,390	1,730/3,810	1,810/3,990	1,890/4,170
SG 40, for mounting to quick coupler SWA 48 and SWA 66										
Cutting width	mm/in	1,100/43"	1,300/51"		1,100/43"	1,300/51"				
Capacity	m ³ /yd ³	1.30/1.70	1.60/2.09		1.10/1.44	1.40/1.83				
Weight	kg/lb	2,230/4,920	2,800/6,170		2,320/5,120	2,900/6,390				

Serial Equipment

Undercarriage

Lashing eyes
Sprocket with dirt ejector
Track and carrier rollers, sealed and lifetime-lubricated

Uppercarriage

Anti-skid surfaces
Automatic swing brake lock
DEF tank filling indicator
DEF tank lockable access hatch
Engine hood with gas spring opening
Filters accessible from ground level
Handrails
Hydraulic oil level, visible from ground level
Lockable fuel tank cap
Lockable service doors
Main switch, manual, lockable
Protection grid on radiator fan
Sound insulation
Swing drive gearbox oil level, visible from the cab
Swing-out radiators
Windshield washer fluid tank

Hydraulic System

Filter with integrated fine filters
Hydraulic pressure measuring ports
Liebherr Positive Control system with 2 independent circuits
Magnetic rod
Pressure accumulator for controlled lowering of equipment with engine turned off

Engine

Air filter with automatic dust ejector
Automatic engine idling / speed increase, controlled via joystick sensors
Common-Rail injection system
Exhaust gas after-treatment system – SCR
Fixed geometry turbocharger
Fuel fine filter
Fuel pre-filter and water separator
Fuel priming pump
Intercooler
Power Pack US EPA Tier 4 Final
Stepless adjustable engine speed

Operator's Cab

7" multifunction color touchscreen
Air conditioning, automatic, tri-zone, controlled via display
Armrests adjustable in width, height and inclination
Bottle holder
Cab air filters housing, accessible from ground level
Cab door sliding windows
Cigarette lighter
Coat hook
DEF consumption on touchscreen
DEF level on touchscreen
Electric socket in cabin (12 V)
Electric socket in cabin (24 V)
Emergency hammer
Engine oil level on touchscreen
Fuel consumption on touchscreen
Fuel level on touchscreen
Hydraulic oil level on touchscreen
Interior lighting
Laminated right hand side window
LiDAT Plus (Liebherr data transfer system)*
Mechanical hour meters, visible from ground level
Movement priority between swing and boom, adjustable via touchscreen
Movement priority for stick-in, adjustable via touchscreen
Rain hood over front window opening
Rearview mirror
Rear view monitoring camera
Rear window emergency exit
Roll-down sun blinds for windscreen and roof window
ROPS safety cab structure (ISO 12117-2)
Rubber floor mat, fixed on floor and removable
Shortkey button on joystick configurable
Storage box
Storage nets
Storage spaces
Tilttable console left
Tinted windows
Visco-elastic damping
Windscreen wiper and washer
Work mode selector

Equipment

Boom cylinders regeneration
Pipe fracture safety valve for stick cylinder
Pipe fracture safety valves for boom cylinders
Pivot points made of cast steel
SAE split flanges on high pressure lines
Stick cylinder regeneration

* optionally extendable after one year

Equipment Standard/Option

Undercarriage

Chain guide 1 piece	•
Chain guide 3 pieces	+
Chain guide 4 pieces	+
Cover and base plate for undercarriage center section	•
Dozer and stabilizer blade 3,000 mm / 9'10"	+
Dozer and stabilizer blade 3,350 mm / 11'	+
Reinforced cover and base plate for undercarriage center section	+
Special painting	+
Steps	•
Steps wide	+
Track pads triple grouser 600 mm / 24" / 700 mm / 28" / 900 mm / 35"	+
Track pads triple grouser 800 mm / 31"	•
Track pads triple grouser reinforced 600 mm / 24" / 700 mm / 28" / 800 mm / 31"	+
Tracks, sealed and greased	•
Tracks, sealed and greased, reinforced	+
Undercarriage LC	•
Undercarriage storage compartment	+

Uppercarriage

Air pre-filter with cyclonical dust trap	+
Centralized lubrication system (automatic)	•
Centralized lubrication system (manual)	+
Counterweight standard 8.0 t / 17,640 lb	•
Electric socket on uppercarriage (24 V)	+
Extended tool set including tool box	+
Fuel anti-theft protection	+
Headlight on uppercarriage, front left, LED+, 1 piece, protection included	+1)
Headlight on uppercarriage, front right, LED, 1 piece, protection included	•1)
Headlight on uppercarriage, front right, LED+, 1 piece, protection included	+1)
Headlight on uppercarriage, lateral right, LED+, 1 piece	+1)
Headlights on uppercarriage, rear, LED+, 2 pieces	+1)
Lighting for tank area 1)	+
Lighting for uppercarriage access 1)	+
Pre-heating system for fuel	+
Reflective warning stickers	+
Reversible fan drive	+
Rotating beacons on uppercarriage, rear, LED, 2 pieces	+
Skyview 360°	+
Special painting	+
Tank refilling pump fuel	+
Tool set including storage case	•
Uppercarriage bottom protection	+

Hydraulic System

Bypass filter for hydraulic oil	+
Liebherr hydraulic oil	•
Liebherr hydraulic oil, adapted for extreme climate conditions	+
Liebherr hydraulic oil, biodegradable	+
High pressure circuit bypass	+
High pressure circuit flow summation	+

Engine

Automatic engine shutdown after idling	+
Engine shut-down with overrun	+
Lighting for engine compartment 1)	+



Operator's Cab

3" seat belt with retractor, orange color	•
4-points seat belt	+
Acoustic travel alarm deactivatable	+
Auxiliary heater programmable	+
Bottom windscreen wiper	+
Cool box (12 V)	+
Dark tinted windows	+
Electronic immobilizer	+
Emergency stop in cab	+
FGPS front guard	+
FGPS front guard tiltable	+
Filter for hydraulic hammer return flow	+
Fire extinguisher	+
First-aid box	+
Follow me home with lighting for cabin access ¹⁾	+
Footrest	+
FOPS top guard	+
FOPS top guard flat	+
Handrests elevated for joysticks	+
Headlights on cab, front, LED, 2 pieces	• ¹⁾
Headlights on cab, front, LED+, 2 pieces	+ ¹⁾
Headlights on cab roof, front, LED+, 2 pieces	+ ¹⁾
High pressure circuit switchable on pedals or mini-joystick	+
High pressure circuit with Tool Control (20 attachment adjustments on display)	+
Impact resistant one-piece windscreen	+
Impact resistant roof window	+
Integral protection guard	+
Laminated roof window	•
Lightbar on cabin	+
Luminosity control (LED+ headlights) ¹⁾	+
Medium pressure circuit	+
Mini-joysticks proportional	•
Movement restriction for boom	+
Movement restriction for stick	+
Operator seat Comfort	•
Operator seat Premium	+
Overload warning system	+
Preparation for machine guidance system	+
Preparation for tiltrotator	+
Radio Comfort	+
Radio pre-installation	•
Retractable laminated two-piece windscreen	•
Right hand side view monitoring camera	•
Roof sun shield	+
Roof window wiper	+
Rotating beacon on cabin, LED, 1 piece	+
Seat belt reminder	+
Special painting	+
Sun visor	+
Switch between high pressure and bucket cylinder controls	+
Windscreen bottom protection grid	+



Equipment

Bucket cylinder rod protection	+
Centralized lubrication extended for connecting link	+
Grapple hydraulic lines (bucket cylinder inactive)	+
Headlight guard on boom, right	+
Headlight guards on boom, right and left	+
Headlight on boom, left, LED+, 1 piece	+ ¹⁾
Headlight on boom, right, LED, 1 piece	• ¹⁾
Headlight on boom, right, LED+, 1 piece	+ ¹⁾
Headlight on stick, bottom, LED+, 1 piece	+ ¹⁾
Leak oil line for attachment	+
Lifting eye on stick 16.0 t/ 35,270 lb	+
LIKUFIX electric signal plug	+
LIKUFIX for quick coupler SWA 48 hydraulic	+
LIKUFIX for quick coupler SWA 66 hydraulic	+
Load holding valve for bucket cylinder	+
Lubrication hoses protection on stick	+
Mono boom 6.20 m/ 20'4"	•
Quick coupler SWA 48 hydraulic	+
Quick coupler SWA 48 mechanical	+
Quick coupler SWA 66 hydraulic	+
Quick coupler SWA 66 mechanical	+
Security for hoist cylinders	+
Special painting	+
Stick 2.50 m/ 8'2"	+
Stick 3.20 m/ 10'6"	+
Stick 3.70 m/ 12'2"	+
Stick bottom protection	+
Tool Management	+

• = Standard, + = Option

¹⁾ Equipment not individually available, but only as predefined lighting packages
Non-exhaustive list, please contact us for further information.

Options and/or special equipments, supplied by vendors other than Liebherr, are only to be installed with the knowledge and approval of Liebherr in order to retain warranty.

The Liebherr Group of Companies



Diverse Product Range

The Liebherr Group is one of the largest construction equipment manufacturers in the world. Liebherr's quality products and services hold a high reputation in many industries. The wide range includes domestic appliances, aerospace and transportation systems, machine tools and maritime cranes.

Exceptional Customer Benefit

Every product line provides a complete range of models in many different versions. With both their technical excellence and superior quality, Liebherr products offer customers the highest benefits in practical applications.

State-of-the-art Technology

Liebherr attributes great importance to the product areas of core technology and components, in order to achieve its consistent, top-quality products. Important modules and components are developed and manufactured in-house, for instance, the entire drive and control technology for the construction equipment and mining trucks.

Worldwide and Family-Owned

Hans Liebherr founded the Liebherr family company in 1949. Since that time, the enterprise has steadily grown to a group of more than 130 companies with more than 46,000 employees located on all continents. The corporate headquarters of the Group is Liebherr-International AG in Bulle, Switzerland. The Liebherr family is the sole owner of the company.

www.liebherr.us

Liebherr USA, Co.

Construction Equipment Division
4100 Chestnut Avenue, Newport News, VA 23607, USA
☎ +1 (757) 245 5251, Fax +1 (757) 928 8701
www.liebherr.us, E-Mail: Construction.USA@liebherr.com
www.facebook.com/LiebherrConstruction