

Product Information: Crawler Excavator

R 922

Litronic®



Generation

8

Engine

161 HP / 120 kW

Tier 4 Final

Operating Weight

23,350 kg / 51,480 lb

Bucket Capacity

0.55 – 1.50 m³ / 0.72 – 1.96 yd³

LIEBHERR

Experience the Progress

R 922



Safety

- Panoramic visibility with no obstructions and camera on the rear and the right side equipment for enhanced safety
- Lifiable console for easy and safe access to cab
- ROPS-certified cab structure: rollover protection
- Emergency exit via the rear cab window
- Right window and windshield in laminated and tinted glass

Equipment

- Large choice of types and sizes of equipment
- Safety check valves for hoist and stick cylinders
- Guaranteed maintenance thanks to automatic centralised lubrication system (option)

Undercarriage

- Robust, reliable X-frame undercarriage, easy to secure thanks to its integrated eyelets
- Easy maintenance
- Maintenance-free travel gear and track rollers with lifetime lubrication
- Extra storage as an option





Comfort

- Spacious, air-conditioned work space
- Airsprung seat with vertical and horizontal suspension
- Easy-to-use high resolution 7" colour touchscreen
- Completely retractable front cab window
- New LED lighting as standard

Engine

- New engine that conforms with the US EPA Tier 4 Final exhaust emissions standard
- Automatic idle-stop

Maintenance

- Innovative servicing concept, with service points accessible from ground level
- New concept for lateral access to uppercarriage and large maintenance platform
- Engine oil, hydraulic oil, fuel and urea (diesel exhaust fluid) levels visible on the display

Technical Data



Engine

Rating	per SAE J1349	161 HP (120 kW) at 1,800 rpm
	per ISO 9249	163 HP (120 kW) at 1,800 rpm
Torque		682 Nm at 1,400 rpm / 503 lbf ft at 1,400 rpm
Model	Liebherr D924 A7-04	
Type	4 cylinder in-line	
Bore	104 mm / 4.1 in	
Stroke	132 mm / 5.2 in	
Displacement	4.5 l / 275 in³	
Engine operation	4-stroke diesel Common-Rail Turbo-charged and after-cooler	
Exhaust gas treatment	Tier 4 Final DOC + SCR Passive regeneration by thermo management	
Cooling system	Water-cooled and oil cooler, after-cooled and fuel cooled	
Air cleaner	Dry-type air cleaner with pre-cleaner	
Fuel tank	400 l / 106 gal	
Urea tank	46 l / 12 gal	
Electrical system	Voltage 24 V Batteries 2 x 135 Ah/ 12 V Alternator Three-phase current 28 V/ 140 A Engine idling Sensor controlled	



Hydraulic Controls

Power distribution	Via control valves, simultaneous and independent actuation of undercarriage, swing drive and equipment	
Electric servo circuit	Electro-hydraulic control	
Equipment and swing	Proportional via joystick levers	
Travel	– Proportional control via foot pedals or removable levers – Automatic or manual speed adjustment	
Additional functions	Proportional regulation via foot pedals or mini-joystick	



Hydraulic System

Hydraulic system	Positive Control hydraulic system. Demand-based, double independent pump flows Features high system dynamics and sensitivity provided by integrated system controlling	
Hydraulic pump	For equipment and travel drive Liebherr, variable displacement, swashplate double pump	
Max. flow	2 x 210 l/min. / 2 x 55 gpm	
Max. pressure	380 bar / 5,511 psi	
Pump management	Electronic management synchronous to the control block. Open circuit for the rotation	
Hydraulic tank	155 l / 41 gal	
Hydraulic system	max. 320 l / max. 85 gal	
Hydraulic oil filter	1 main return filter with integrated partial micro filtration (10 µm / 1,250 mesh)	
Cooling system	Compact cooler, consisting of a water cooler, sandwiched with hydraulic oil cooler and fuel and after-cooler cores and hydrostatically driven fan	
MODE selection	Adjustment of engine and hydraulic performance via a mode pre-selector to match application, e.g. for especially economical and environmentally friendly operation or for maximum digging performance and heavy-duty jobs	
Engine speed and performance setting	Stepless adjustment of engine output and hydraulic power via engine speed	



Swing Drive

Drive	Liebherr swashplate motor with integrated brake valve and torque control	
Transmission	Liebherr compact planetary reduction gears	
Swing ring	Liebherr, sealed race ball bearing swing ring, internal teeth	
Swing speed	0 – 12.9 rpm stepless	
Swing torque	74.3 kNm / 54,801 lbf ft	
Holding brake	Wet multi-disc (spring applied, pressure released)	



Operator's Cab

Cab	ROPS safety cab structure (roll-over protection system according to ISO 12117-2:2008) with windscreen, totally or partially retractable (only upper part), under cab roof, work headlights integrated in the ceiling, a door with a sliding window (can be opened on both sides), large storing box and several stowing possibilities, shock-absorbing suspension, laminated right hand side and roof windows, all windows tinted, separate extensible window shades for the sunroof window and wind-screen, cigarette lighter and 24 V plug, 12 V plug, cup holder, mobile phone storage net
Operator's seat	Liebherr-Comfort seat, airsprung with automatic weight adjustment, vertical and longitudinal seat damping including consoles and joysticks. Seat and armrests adjustable separately and in combination (adjustable in width, height and inclination), seat heating as standard
Arm consoles	Tilttable console left, oscillating with seat
Operation and displays	Large high-resolution operating unit, intuitive, color display with touchscreen, video-compatible, numerous setting, control and monitoring options, e.g. air conditioning control, fuel consumption, machine and attachment parameters
Air-conditioning	Automatic air-conditioning, recirculated air function, fast de-icing and demisting at the press of a button, air vents can be operated via a menu. Recirculated air and fresh air filters can be easily replaced and are accessible from the outside. Heating-cooling unit, designed for extreme outside temperatures, sensors for solar radiation, inside and outside temperatures
Noise emission	
ISO 6396	L_{pA} (inside cab) = 70 dB(A)
2000/14/EC	L_{WA} (surround noise) = 103 dB(A)



Undercarriage

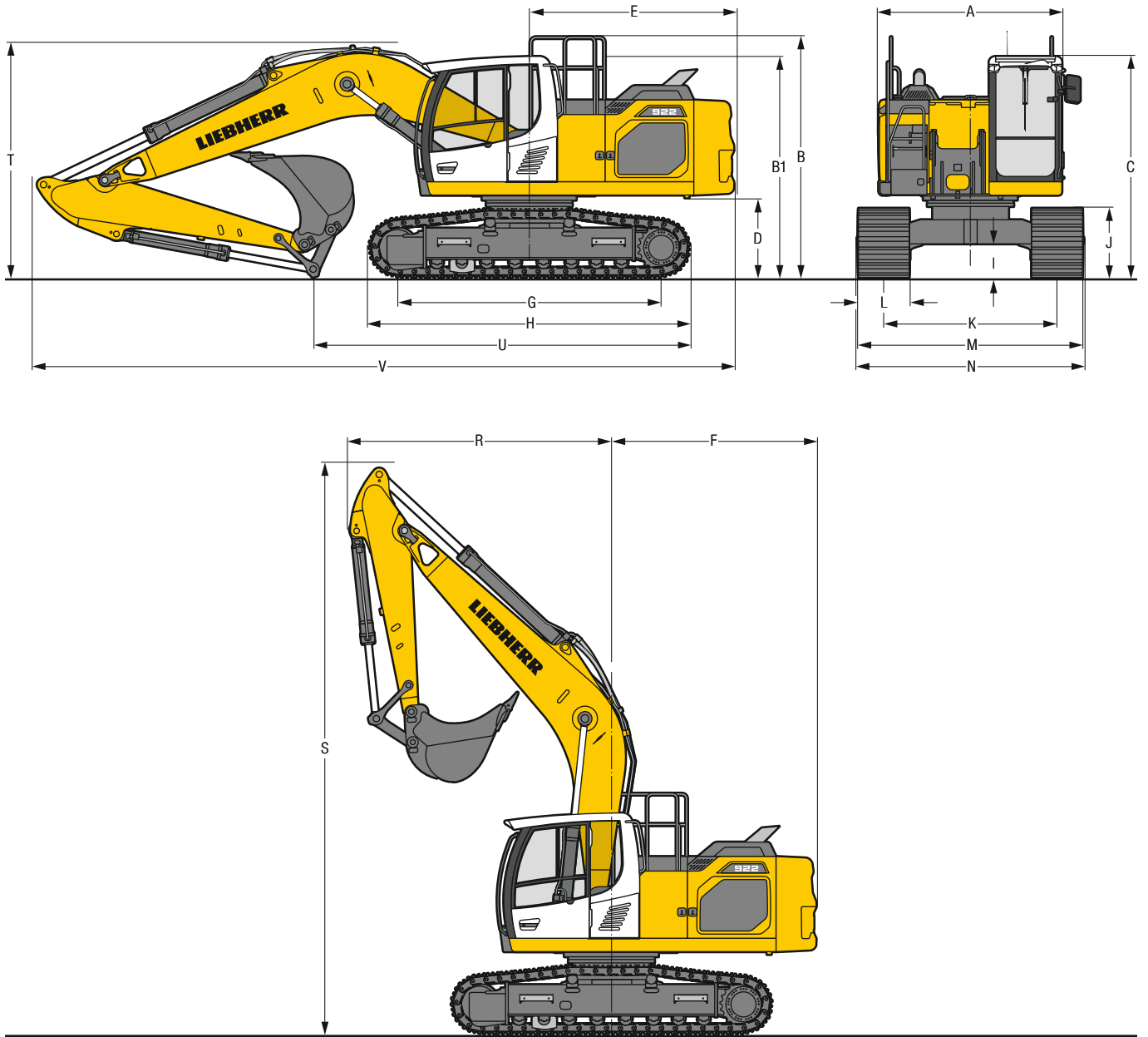
LC	Gauge 2,390 mm / 7'10"
Drive	Liebherr swashplate motor with brake valves on both sides
Transmission	Liebherr planetary reduction gear
Maximum travel speed	Low range 3.1 km/h / 1.9 mph High range 5.9 km/h / 3.7 mph
Drawbar pull on crawler	236 kN / 53,060 lbf
Track components	B60, D6C, maintenance-free
Track rollers / Carrier rollers	8/2
Tracks	Sealed and greased
Track pads	Triple grouser
Holding brake	Wet multi-disc (spring applied, pressure released)
Brake valves	Integrated into travel motor
Lashing eyes	Integrated



Equipment

Type	Combination of resistant steel plates and cast steel components
Hydraulic cylinders	Liebherr cylinders with seal and guidance systems and shock protection
Bearings	Sealed, low maintenance
Lubrication	Liebherr central lubrication system
Hydraulic connections	Pipes and hoses equipped with SAE split-flange connections
Buckets	Standard equipped with Liebherr tooth system

Dimensions



		LC			mm/ft in	
A	Uppercarriage width				2,545**/ 8' 4"***	
B	Uppercarriage height				3,335 /10'11"	
B1	Uppercarriage height (handrails folded)				3,060 /10'	
C	Cab height				3,060 /10'	
D	Counterweight ground clearance				1,100 / 3' 7"	
E	Rear-end length				2,830 / 9' 3"	
F	Tail swing radius				2,880 / 9' 5"	
G	Wheelbase				3,640 /11'11"	
H	Undercarriage length				4,435 /14' 7"	
I	Undercarriage ground clearance				485 / 1' 7"	
J	Track height				960 / 3' 2"	
K	Track gauge				2,390 / 7'10"	
L	Track pad width	600 / 24"	700 / 28"	800 / 31"	900 / 35"	
M	Width over tracks	2,990/9'10"	3,090 /10' 2"	3,190 /10' 6"	3,290 /10'10"	
N	Width over steps	2,925/9' 7"	3,125*/10' 3"*	3,125*/10' 3"*	3,225* /10' 7"*	

* width with removable steps

** without door stop device and spacer

		Stick length	Mono boom 5.70 m/18'8"		
		m/ft in	direct mounting		
			mm/ft in		
R	Front swing radius	2.50/ 8'2"	3,650/12'		
		2.90/ 9'6"	3,650/12'		
		3.50/11'6"	3,600/11'10"		
S	Height with boom up	7,900/25'11"			
T	Boom height	2.50/ 8'2"	3,250/10' 8"		
		2.90/ 9'6"	3,250/10' 8"		
		3.50/11'6"	3,150/10' 4"		
U	Length on ground	2.50/ 8'2"	6,200/20' 4"		
		2.90/ 9'6"	5,900/19' 4"		
		3.50/11'6"	4,450/14' 7"		
V	Overall length	9,700/31'10"			
	Bucket	1.15 m ³ /1.50 yd ³			

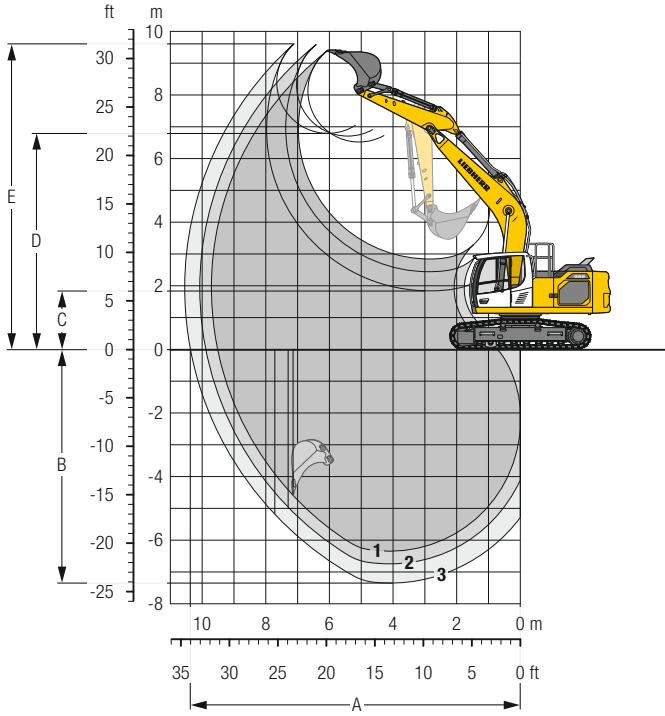
Transport Dimensions

removable elements dismantled

		Stick	Mono boom 5.70 m/18'8"			
		m/ft in	mm/ft in			
	Pad width		600 / 24"	700 / 28"	800 / 31"	900 / 35"
	Transport width		2,990/9'10"	3,125/10' 3"	3,190/10' 6"	3,290/10'10"
	Transport length		9,700/31'10"			
	Transport height	2.50/ 8'2"	3,250/10' 8"			
		2.90/ 9'6"	3,250/10' 8"			
		3.50/11'6"	3,150/10' 4"			
	Bucket		1.15 m ³ /1.50 yd ³			

Backhoe Bucket

with Mono Boom 5.70 m / 18'8" and Counterweight 4.0 t / 8,820 lb



Digging Envelope

without quick coupler		1	2	3
Stick length	m/ft in	2.50/ 8' 2"	2.90/ 9'6"	3.50/11'6"
A Max. reach at ground level	m/ft in	9.51/31' 2"	9.89/32'5"	10.37/34'
B Max. digging depth	m/ft in	6.35/20'10"	6.75/22'2"	7.35/24'1"
C Min. dumping height	m/ft in	2.85/ 9' 4"	2.45/ 8'	1.85/ 6'1"
D Max. dumping height	m/ft in	6.53/21' 5"	6.71/22'	6.80/22'4"
E Max. cutting height	m/ft in	9.40/30'10"	9.59/31'6"	9.61/31'6"

Forces

without quick coupler		1	2	3
Stick digging force (ISO 6015)	kN/lbf	125/28,100	113/25,400	99/22,260
Bucket digging force (ISO 6015)	kN/lbf	160/35,970	160/35,970	160/35,970
Stick digging force (SAE J1179)	kN/lbf	120/26,980	109/24,500	95/21,360
Bucket digging force (SAE J1179)	kN/lbf	140/31,470	140/31,470	140/31,470

Operating Weight and Ground Pressure

The operating weight includes the basic machine with counterweight 4.0 t / 8,820 lb, mono boom 5.70 m / 18'8", stick 2.90 m / 9'6" and bucket 1.15 m³ / 1.50 yd³ (810 kg / 1,790 lb).

Undercarriage		LC			
Pad width	mm/in	600/24"	700/28"	800/31"	900/35"
Weight	kg/lb	22,450/49,490	22,700/50,050	23,100/50,930	23,400/51,590
Ground pressure	kg/cm²/psi	0.48/6.8	0.41/5.8	0.37/5.3	0.33/4.7

Buckets Machine stability per ISO 10567* (75% of tipping capacity)

	Cutting width	Capacity ISO 7451	Weight ³⁾	Weight ⁴⁾	LC-Undercarriage (with track pads 800 mm/31")					
					Stick length (m/ft in)					
					without quick coupler			with quick coupler		
mm	m³	kg	kg	2.50	2.90	3.50	2.50	2.90	3.50	
in	yd³	lb	lb	8'2"	9'6"	11'6"	8'2"	9'6"	11'6"	
STD ¹⁾	650	0.55	580	590	▲	▲	▲	▲	▲	▲
	26"	0.72	1,280	1,300	▲	▲	▲	▲	▲	▲
	850	0.75	620	630	▲	▲	▲	▲	▲	▲
	34"	0.98	1,370	1,390	▲	▲	▲	▲	▲	▲
	1,050	0.95	700	710	▲	▲	▲	▲	▲	▲
	41"	1.24	1,540	1,570	▲	▲	▲	▲	▲	▲
	1,250	1.15	810	830	▲	▲	■	▲	▲	■
	49"	1.50	1,790	1,830	▲	▲	■	▲	■	▲
	1,250	1.25	890	910	▲	■	▲	▲	■	▲
	49"	1.63	1,960	2,010	■	▲	■	▲	■	▲
1,400	1.35	850	880	■	▲	■	■	▲	■	
55"	1.77	1,870	1,940	▲	■	■	▲	■	■	
1,400	1.50	950	980	▲	■	△	▲	■	△	
55"	1.96	2,090	2,160	▲	■	△	▲	■	△	
HD ²⁾	650	0.55	640	650	▲	▲	▲	▲	▲	▲
	26"	0.72	1,410	1,430	▲	▲	▲	▲	▲	▲
	850	0.75	695	705	▲	▲	▲	▲	▲	▲
	34"	0.98	1,530	1,550	▲	▲	▲	▲	▲	▲
	1,050	0.95	790	800	▲	▲	▲	▲	▲	■
	41"	1.24	1,740	1,760	▲	▲	▲	▲	▲	■
	1,250	1.15	910	940	▲	▲	■	▲	■	▲
	49"	1.50	2,010	2,070	▲	▲	■	▲	■	▲
	1,250	1.25	1,010	1,030	▲	■	▲	■	▲	■
	49"	1.63	2,230	2,270	▲	■	▲	■	▲	■
1,400	1.35	970	990	■	▲	■	▲	■	△	
55"	1.77	2,140	2,180	▲	■	■	▲	■	△	
1,400	1.50	1,090	1,120	▲	■	△	■	△	-	
55"	1.96	2,400	2,470	▲	■	△	■	△	-	

* Indicated loads are based on ISO 10567, at maximum reach, and may be swung 360° on firm and even ground

¹⁾ Standard bucket with teeth Z 40 ²⁾ HD bucket with teeth Z 40 ³⁾ Bucket for direct mounting ⁴⁾ Bucket for mounting to quick coupler
Other buckets available upon request

Max. material weight ▲ = ≤ 2.0 t/m³ / 3,400 lb/yd³, ■ = ≤ 1.8 t/m³ / 3,000 lb/yd³, ▲ = ≤ 1.65 t/m³ / 2,800 lb/yd³, ■ = ≤ 1.5 t/m³ / 2,500 lb/yd³, △ = ≤ 1.2 t/m³ / 2,000 lb/yd³

Lift Capacities

with Mono Boom 5.70 m / 18'8", Counterweight 4.0 t / 8,820 lb and Track Pads 800 mm / 31"

Stick 2.50 m / 8'2"

Under-carriage	Height	3.0 m 10 ft		4.5 m 15 ft		6.0 m 20 ft		7.5 m 25 ft		m		
		Can be steered through 360°	In longitudinal position of undercarriage	Can be steered through 360°	In longitudinal position of undercarriage	Can be steered through 360°	In longitudinal position of undercarriage	Can be steered through 360°	In longitudinal position of undercarriage	ft	in	
LC	7.5 m t									5.7*	5.7*	5.8
	25 ft lb									12.7*	12.7*	18'7"
	6.0 m t					5.4	6.1*			4.2	5.3*	7.0
	20 ft lb					11.7	13.3*			9.5	11.8*	22'7"
	4.5 m t			7.8*	7.8*	5.2	6.7*	3.7	5.6	3.6	5.3*	7.7
	15 ft lb			16.9*	16.9*	11.3	14.5*	8.0	11.9*	7.9	11.6*	25'1"
	3.0 m t			7.5	10.0*	5.0	7.6*	3.6	5.4	3.2	4.9	8.0
	10 ft lb			16.2	21.5*	10.7	16.5*	7.8	11.7	7.2	10.8	26'4"
	1.5 m t			7.0	11.6	4.7	7.4	3.5	5.3	3.1	4.8	8.1
	5 ft lb			15.1	24.9	10.2	15.9	7.5	11.5	6.9	10.5	26'6"
	0 m t			6.8	11.4	4.6	7.2	3.4	5.2	3.2	4.9	7.9
	0 ft lb			14.6	24.4	9.9	15.5	7.4	11.3	7.1	10.8	25'10"
	-1.5 m t	11.1*	11.1*	6.8	11.3	4.5	7.2			3.5	5.4	7.3
	-5 ft lb	25.4*	25.4*	14.6	24.3	9.8	15.4			7.8	12.0	24"
	-3.0 m t	13.4	15.4*	6.9	11.1*	4.6	7.3			4.3	6.7	6.4
-10 ft lb	28.7	33.5*	14.9	24.1*	10.0	15.7			9.5	14.8	20'10"	
-4.5 m t			7.2	8.3*					6.6	7.5*	4.8	
-15 ft lb			15.6	17.3*					15.0	16.6*	15'5"	

Stick 2.90 m / 9'6"

Under-carriage	Height	3.0 m 10 ft		4.5 m 15 ft		6.0 m 20 ft		7.5 m 25 ft		m		
		Can be steered through 360°	In longitudinal position of undercarriage	Can be steered through 360°	In longitudinal position of undercarriage	Can be steered through 360°	In longitudinal position of undercarriage	Can be steered through 360°	In longitudinal position of undercarriage	ft	in	
LC	7.5 m t									5.5	5.6*	
	25 ft lb									11.3*	11.3*	
	6.0 m t									5.5	5.6*	
	20 ft lb									11.8	12.2*	
	4.5 m t			7.1*	7.1*	5.3	6.2*	3.7	5.6	3.3	4.4*	8.1
	15 ft lb			15.4*	15.4*	11.4	13.5*	8.0	12.0	7.3	9.8*	26'4"
	3.0 m t			7.6	9.3*	5.0	7.2*	3.6	5.4	3.0	4.6	8.4
	10 ft lb			16.4	20.0*	10.8	15.6*	7.7	11.7	6.6	10.1	27'6"
	1.5 m t			7.0	11.3*	4.7	7.4	3.4	5.3	2.9	4.4	8.5
	5 ft lb			15.2	24.3*	10.2	15.9	7.4	11.4	6.4	9.8	27'8"
	0 m t			5.7*	5.7*	6.7	11.3	4.5	7.2	3.3	5.2	8.2
	0 ft lb			13.1*	13.1*	14.5	24.3	9.8	15.4	7.2	11.2	6.5
	-1.5 m t	10.5*	10.5*	6.7	11.2	4.5	7.1	3.3	5.2	3.2	4.9	7.7
	-5 ft lb	23.9*	23.9*	14.4	24.1	9.6	15.3	7.2	11.1	7.1	10.9	25'4"
	-3.0 m t	13.1	16.3*	6.8	11.3	4.5	7.1			3.8	5.9	6.8
-10 ft lb	28.2	35.4*	14.5	24.3	9.7	15.4			8.5	13.2	22'4"	
-4.5 m t			7.0	9.3*					5.4	7.4*	5.4	
-15 ft lb			27.8*	27.8*	15.1	19.7*			12.3	16.2*	17'6"	

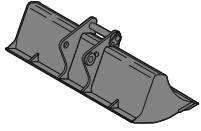
Stick 3.50 m / 11'6"

Under-carriage	Height	3.0 m 10 ft		4.5 m 15 ft		6.0 m 20 ft		7.5 m 25 ft		m		
		Can be steered through 360°	In longitudinal position of undercarriage	Can be steered through 360°	In longitudinal position of undercarriage	Can be steered through 360°	In longitudinal position of undercarriage	Can be steered through 360°	In longitudinal position of undercarriage	ft	in	
LC	7.5 m t									3.7*	3.7*	6.9
	25 ft lb									8.2*	8.2*	22'4"
	6.0 m t							3.8	4.6*	3.5	3.5*	7.9
	20 ft lb							8.2	9.3*	7.7	7.8*	25'10"
	4.5 m t					5.3	5.5*	3.7	5.3*	3.0	3.5*	8.5
	15 ft lb					11.5	12.1*	8.0	11.6*	6.6	7.7*	27'11"
	3.0 m t	12.8*	12.8*	7.8	8.3*	5.0	6.6*	3.6	5.4	2.7	3.6*	8.9
	10 ft lb	27.3*	27.3*	16.8	17.8*	10.9	14.3*	7.7	11.7	6.0	8.0*	29'1"
	1.5 m t	6.2*	6.2*	7.1	10.4*	4.7	7.4	3.4	5.3	2.6	3.9*	8.9
	5 ft lb	14.8*	14.8*	15.3	22.5*	10.2	15.9	7.4	11.3	5.8	8.6*	29'4"
	0 m t	7.2*	7.2*	6.7	11.3	4.5	7.1	3.3	5.1	2.7	4.1	8.7
	0 ft lb	16.4*	16.4*	14.5	24.2	9.7	15.4	7.1	11.0	5.9	9.1	28'7"
	-1.5 m t	10.4*	10.4*	6.6	11.1	4.4	7.0	3.2	5.1	2.9	4.4	8.2
	-5 ft lb	23.5*	23.5*	14.1	23.8	9.4	15.1	7.0	10.9	6.3	9.8	27'
	-3.0 m t	12.8	15.0*	6.6	11.1	4.4	7.0			3.3	5.2	7.4
-10 ft lb	27.5	34.1*	14.2	23.9	9.4	15.1			7.3	11.5	24'2"	
-4.5 m t	13.2	14.7*	6.8	10.3*	4.5	7.2			4.4	7.0	6.1	
-15 ft lb	28.3	31.6*	14.6	22.1*					9.9	15.7	19'10"	

Height
 Can be steered through 360°
 In longitudinal position of undercarriage
 Max. reach
 * Limited by hydr. capacity

The load values are quoted in tons (t) / lb x 1,000 at stick end (without bucket), and may be swung 360° on firm and even ground. Adjacent values are valid for the undercarriage when in the longitudinal position. Capacities are valid for 800 mm / 31" wide track pads. Indicated loads are based on ISO 10567 standard and do not exceed 75% of tipping or 87% of hydraulic capacity (indicated via *). Without bucket cylinder, link and lever the lift capacities will increase by 320 kg / 710 lb. Lifting capacity of the excavator is limited by machine stability and hydraulic capacity.

Available Attachments



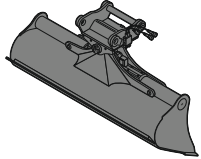
Rigid Ditch Cleaning Bucket

GRL 90, for direct mounting

Cutting width	mm/in	1,500/59"	2,000/79"	2,010/79"	2,400/95"				
Capacity	m ³ /yd ³	0.50/0.65	0.70/0.92	0.85/1.11	0.85/1.11				
Weight	kg/lb	400/880	500/1,100	530/1,170	580/1,280				

GRL 90, for mounting to quick coupler SWA 48

Cutting width	mm/in	1,500/59"	1,500/59"	2,000/79"	2,000/79"	2,000/79"	2,400/95"	2,400/95"	2,400/95"
Capacity	m ³ /yd ³	0.50/0.65	0.95/1.24	0.70/0.92	1.20/1.57	1.25/1.63	0.85/1.11	1.15/1.50	1.15/1.50
Weight	kg/lb	430/950	560/1,240	400/880	640/1,410	600/1,320	600/1,320	650/1,430	650/1,430



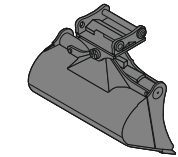
Ditch Cleaning Bucket

GRL 90, 2 x 50° tiltable, for direct mounting

Cutting width	mm/in	1,600/63"	2,000/79"	2,000/79"	2,000/79"	2,200/87"	2,400/95"	2,800/110"			
Capacity	m ³ /yd ³	0.80/1.05	0.50/0.65	0.70/0.92	1.00/1.31	1.15/1.50	0.85/1.11	1.45/1.90			
Weight	kg/lb	798/1,760	686/1,510	819/1,810	883/1,950	920/2,030	885/1,950	1,009/2,220			

GRL 90, 2 x 50° tiltable, for mounting to quick coupler SWA 48

Cutting width	mm/in	1,600/63"	2,000/79"	2,000/79"	2,000/79"	2,200/87"	2,200/87"	2,200/87"	2,400/95"	2,400/95"	2,800/110"
Capacity	m ³ /yd ³	0.80/1.05	0.50/0.65	0.70/0.92	1.00/1.31	0.80/1.05	1.15/1.50	1.40/1.83	0.85/1.11	1.25/1.63	1.85/2.42
Weight	kg/lb	850/1,870	690/1,520	880/1,940	940/2,070	880/1,940	980/2,160	1,000/2,210	890/1,960	1,000/2,210	1,088/2,400



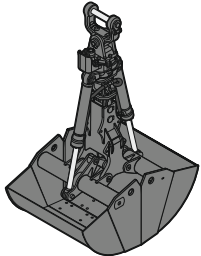
Tilt Bucket

SL 90, 2 x 50° tiltable, for direct mounting

Cutting width	mm/in	1,600/63"	1,600/63"	1,600/63"					
Capacity	m ³ /yd ³	0.80/1.05	1.00/1.31	1.35/1.77					
Weight	kg/lb	768/1,690	820/1,810	918/2,020					

SL 90, 2 x 50° tiltable, for mounting to quick coupler SWA 48

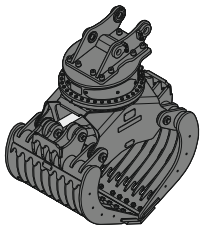
Cutting width	mm/in	1,500/59"	1,600/63"	1,600/63"	1,600/63"	1,600/63"	1,600/63"	1,600/63"	1,600/63"	1,600/63"	1,600/63"
Capacity	m ³ /yd ³	1.20/1.57	0.80/1.05	1.00/1.31	1.35/1.77	1.55/2.03	0.80/1.05	1.00/1.31	1.35/1.77	1.55/2.03	1.55/2.03
Weight	kg/lb	970/2,140	820/1,810	890/1,960	970/2,140	1,035/2,280	820/1,810	1,006/2,220	1,184/2,610	1,550/3,420	1,550/3,420
HD-version							X	X	X	X	X



Clamshells

GM 20C, earthmoving shell, for mounting to quick coupler SWA 48 (exists for direct mounting)

Cutting width	mm/in	600/24"	800/31"	1,000/39"	1,200/47"
Capacity	m ³ /yd ³	0.45/0.59	0.60/0.78	0.75/0.98	0.90/1.18
Weight	kg/lb	575/1,270	625/1,380	700/1,540	765/1,690



Sorting Grab

ribbed

perforated

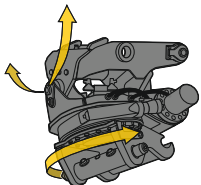
stone tong

SG 30, for direct mounting

Cutting width	mm/in	1,000/39"	1,150/45"	1,000/39"	1,150/45"	1,020/40"
Capacity	m ³ /yd ³	0.75/0.98	0.90/1.18	0.85/1.11	1.00/1.31	0.85/1.11
Weight	kg/lb	1,510/3,330	1,590/3,510	1,490/3,290	1,570/3,460	1,765/3,890

SG 30, for mounting to quick coupler SWA 48

Cutting width	mm/in	1,000/39"	1,150/45"	1,000/39"	1,150/45"	1,020/40"
Capacity	m ³ /yd ³	0.75/0.98	0.90/1.18	0.85/1.11	1.00/1.31	0.85/1.11
Weight	kg/lb	1,510/3,330	1,590/3,510	1,490/3,290	1,570/3,460	1,765/3,890



Tiltrotator

LH-TR 25, for mounting to quick coupler SWA 48

Weight	kg/lb	720/1,590
Rotation		360°
Tilt		2 x 50°

Serial Equipment

Undercarriage

- Lashing eyes
- Sprocket with dirt ejector
- Track and carrier rollers, sealed and lifetime-lubricated

Uppercarriage

- Access platforms without protruding parts
- Anti-skid surfaces
- Automatic swing brake lock
- DEF tank filling indicator
- DEF tank lockable access hatch
- Engine coolant level, visible from the cab
- Engine hood with gas spring opening
- Filters accessible from ground level
- Handrails
- Hydraulic oil level, visible from ground level
- Lockable fuel tank cap
- Lockable service doors
- Lockable storage and accessories compartment
- Lockable storage box
- Main switch, electric, with timer
- Main switch, manual, lockable
- Protection grid on radiator fan
- Safe uppercarriage side access platform
- Sound insulation
- Swing drive gearbox oil level, visible from the cab
- Swing-out radiators
- Windshield washer fluid tank, accessible from ground level

Hydraulic System

- Filter with integrated fine filters
- Hydraulic pressure measuring ports
- Liebherr Positive Control system with 2 independent circuits
- Magnetic rod
- Pressure accumulator for controlled lowering of equipment with engine turned off

Engine

- Air filter with automatic dust ejector
- Automatic engine idling / speed increase, controlled via joystick sensors
- Common-Rail injection system
- Exhaust gas after-treatment system – DOC + SCR
- Fixed geometry turbocharger
- Fuel fine filter
- Fuel pre-filter and water separator
- Fuel priming pump
- Intercooler
- Power Pack US EPA Tier 4 Final
- Stepless adjustable engine speed

Operator's Cab

- 7" multifunction color touchscreen
- Air conditioning, automatic, tri-zone, controlled via display
- Armrests adjustable in width, height and inclination
- Bottle holder
- Cab air filters housing, accessible from ground level
- Cab door sliding windows
- Cigarette lighter
- Coat hook
- DEF consumption on touchscreen
- DEF level on touchscreen
- Electric socket in cabin (12 V)
- Electric socket in cabin (24 V)
- Emergency hammer
- Engine oil level on touchscreen
- Fuel consumption on touchscreen
- Fuel level on touchscreen
- Hydraulic oil level on touchscreen
- Interior lighting
- Laminated right hand side window
- LIDAT Plus (Liebherr data transfer system)*
- Mechanical hour meters, visible from ground level
- Mobile phone storage net
- Movement priority between swing and boom, adjustable via touchscreen
- Movement priority for stick-in, adjustable via touchscreen
- Rain hood over front window opening
- Rearview mirror
- Rear view monitoring camera
- Rear window emergency exit
- Right hand side view monitoring camera
- Roll-down sun blinds for windshield and roof window
- ROPS safety cab structure (ISO 12117-2)
- Rubber floor mat, fixed on floor and removable
- Storage box
- Storage nets
- Storage spaces
- Swing braking torque adjustable via touchscreen
- Tilttable console left
- Tinted windows
- Visco-elastic damping
- Windscreen wiper and washer
- Work mode selector

Equipment

- Boom cylinders regeneration
- Pipe fracture safety valve for stick cylinder
- Pipe fracture safety valves for boom cylinders
- Pivot points made of cast steel
- SAE split flanges on high pressure lines
- Stick cylinder regeneration

* optionally extendable after one year

Equipment Standard/Option

Undercarriage

Chain guide 1 piece	•
Chain guide 3 pieces	+
Reinforced cover and base plate for undercarriage center section	+
Special painting	•
Standard cover plate for undercarriage center section	•
Steps	+
Steps wide	•
Track pads triple grouser 600 mm / 24" / 700 mm / 28" / 900 mm / 35"	+
Track pads triple grouser 800 mm / 31"	•
Track pads triple grouser reinforced 600 mm / 24" / 700 mm / 28"	+
Tracks, sealed and greased	•
Tracks, sealed and greased, reinforced	+
Undercarriage LC	+
Undercarriage storage compartment	+

Uppercarriage

Air pre-filter with cyclonical dust trap	+
Boxing ring	+
Centralized lubrication system (automatic)	•
Centralized lubrication system (manual)	+
Counterweight standard 4.0 t / 8,820 lb	•
Electric socket on uppercarriage (24 V)	+
Extended tool set including tool box	+
Fuel anti-theft protection	+
Headlight on uppercarriage, front left, LED+, 1 piece, protection included	+ ¹⁾
Headlight on uppercarriage, front right, LED, 1 piece, protection included	• ¹⁾
Headlight on uppercarriage, front right, LED+, 1 piece, protection included	+ ¹⁾
Headlight on uppercarriage, lateral left, LED+, 1 piece	+ ¹⁾
Headlight on uppercarriage, lateral right, LED+, 1 piece	+ ¹⁾
Headlights on uppercarriage, rear, LED+, 2 pieces	+ ¹⁾
Lighting for tank area ¹⁾	+
Lighting for uppercarriage access ¹⁾	+
Pre-heating system for fuel	+
Radiator fine mesh protection grid	+
Reflective warning stickers	+
Reversible fan drive	+
Rotating beacons on uppercarriage, rear, LED, 2 pieces	+
Skyview 360°	+
Special painting	+
Tank refilling pump fuel	+
Tool set including storage case	•

Hydraulic System

Bypass filter for hydraulic oil	+
Liebherr hydraulic oil	•
Liebherr hydraulic oil, adapted for extreme climate conditions	+
Liebherr hydraulic oil, biodegradable	+

Engine

Automatic engine shutdown after idling	+
Engine shut-down with overrun	+
Lighting for engine compartment ¹⁾	+

Operator's Cab

3" seat belt with retractor, orange color	•
4-points seat belt	+
Acoustic travel alarm deactivatable	+
Auxiliary heater programmable	+
Bottom windscreen wiper	+
Cool box (12 V)	+
Dark tinted windows	+

• = Standard, + = Option

¹⁾ Equipment not individually available, but only as predefined lighting packages
Non-exhaustive list, please contact us for further information.

Operator's Cab

Electrically adjustable and heated outside rear-view mirrors	+
Electronic immobilizer	+
Emergency stop in cab	+
FGPS front guard	+
Filter for hydraulic hammer return flow	+
Fire extinguisher	+
First-aid box	+
Footrest	+
FOPS top guard	+
Handrests elevated for joysticks	+
Headlights on cab, front, LED, 2 pieces	• ¹⁾
Headlights on cab, front, LED+, 2 pieces	+ ¹⁾
Headlights on cab roof, front, LED+, 2 pieces	+ ¹⁾
High pressure circuit switchable on pedals or mini-joystick	+
High pressure circuit with Tool Control (20 attachment adjustments on display)	+
Impact resistant one-piece windscreen	+
Impact resistant roof window	+
Integral protection guard	+
Laminated roof window	•
Lightbar on cabin	+
Luminosity control (LED+ headlights) ¹⁾	+
Medium pressure circuit	+
Mini-joysticks proportional	•
Movement restriction for boom	+
Movement restriction for stick	+
Operator seat Comfort	•
Operator seat Premium	+
Overload warning system	+
Preparation for machine guidance system	+
Preparation for tiltrotator	+
Preparation for weighing system	+
Radio Comfort	+
Radio pre-installation	•
Retractable laminated two-piece windscreen	•
Roof sun shield	+
Roof window wiper	+
Rotating beacon on cabin, LED, 1 piece	+
Seat belt reminder	+
Shortcut button on joystick configurable	•
Special painting	+
Sun visor	+
Switch between high pressure and bucket cylinder controls	+
Windscreen bottom protection grid	+

Equipment

Bucket cylinder rod protection	+
Centralized lubrication extended for connecting link	+
Floating boom	+
Grapple hydraulic lines (bucket cylinder inactive)	+
Headlight guard on boom, right	+
Headlight guards on boom, right and left	+
Headlight on boom, left, LED+, 1 piece	+ ¹⁾
Headlight on boom, right, LED, 1 piece	• ¹⁾
Headlight on boom, right, LED+, 1 piece	+ ¹⁾
Headlight on stick, bottom, LED+, 1 piece	+ ¹⁾
Liebherr bucket range	+
Liebherr tooth system	+
LIKUFIX electric signal plug	+
LIKUFIX for quick coupler SWA 48 hydraulic	+
Load holding valve for bucket cylinder	+
Lubrication hoses protection on stick	+
Mono boom 5.70 m / 18'8"	+
Quick coupler SWA 48 hydraulic	+
Quick coupler SWA 48 mechanical	+
Special painting	+
Stick 2.50 m / 8'2"	+
Stick 2.90 m / 9'6"	+
Stick 3.50 m / 11'6"	+
Stick bottom protection	+
Tool Management	+

Options and/or special equipments, supplied by vendors other than Liebherr, are only to be installed with the knowledge and approval of Liebherr in order to retain warranty.