

SPECIFICATIONS

HX480^AL

Powered By Cummins Performance Series Engine

Net Power
395 HP (295 kW)
at 2,100 rpm

Standard Bucket
2.6 m³ (3.41 yd³)

Operating Weight
51,920 kg (114,460 lb)



| ENGINE | |
|-------------------------|---|
| Maker / Model | Cummins / X12 |
| Type | Tier 4F/ Stage V Emission Certified, 6 cylinder diesel engine with passive regeneration |
| Gross Power (SAE J1995) | 298 kW (400 hp) at 2,100 rpm |
| Net Power (SAE J1349) | 295 kW (395 hp) at 2,100 rpm |
| Max. Power | 300 kW (402 hp) at 1,800 rpm |
| Max. Torque | 1,898 N·m (1,400 lb-ft) at 1,400 rpm |
| Piston Displacement | 11.8 l (720 cu in) |

| HYDRAULIC SYSTEM | |
|--|---|
| MAIN PUMP | |
| Type | Variable displacement axis piston pumps |
| Max. Flow | 2 × 394 lpm (2 × 104.0 US gpm) |
| Sub-Pump For Pilot (Gear Pump) | 1 × 23.9 lpm (1 × 6.3 US gpm) |
| Cross-sensing and fuel saving pump system. | |

| AUXILIARY PRESSURE | | |
|--------------------|----------------|-------------------------------|
| 2 Way | Flow (l/min) | 26.4~200.8 gpm (100~760 lpm) |
| | Pressure (bar) | 2,611~4,786 psi (180~330 bar) |
| Rotating | Flow (l/min) | 15.9 gpm / (60 lpm) |
| | Pressure (bar) | 4,062 psi / (280 bar) |

| HYDRAULIC MOTORS | |
|------------------|--|
| Travel | Two speed axial pistons motor with brake valve and parking brake |
| Swing | Axial piston motor with automatic brake |

| RELIEF VALVE SETTING | |
|---------------------------------|------------------------------------|
| Implement Circuits | 330kgf/cm ² (4,694 psi) |
| Travel | 360kgf/cm ² (5,120 psi) |
| Power Boost (Boom, Arm, Bucket) | 360kgf/cm ² (5,120 psi) |
| Swing Circuit | 285kgf/cm ² (4,053 psi) |
| Pilot Circuit | 40 kgf/cm ² (569 psi) |
| Service Valve | Installed |

| HYDRAULIC CYLINDERS | |
|-------------------------------|------------------------|
| No. of Cylinder Bore X Stroke | Boom : Ø170x1,580 mm |
| | Arm : Ø190x1,820 mm |
| | Bucket : Ø160x1,370 mm |

| DRIVES & BRAKES | |
|--------------------------------|---|
| Drive Method | Fully hydrostatic type |
| Drive Motor | Axial piston motor, in-shoe design |
| Reduction System | Planetary reduction gear |
| Max. Drawbar Pull | 39,674 kgf (87,466 lbf) |
| Max. Travel Speed (High / Low) | 3.3 km/hr (2.1 mph) / 5.3 km/hr (3.3 mph) |
| Gradeability | 35° (70%) |
| Parking Brake | Multi wet disc |

| CONTROL | |
|---|---|
| Pilot pressure operated joysticks and pedals provide almost effortless and fatigueless operation. | |
| Pilot Control | Two joysticks with one safety lever (LH) : Swing and arm, Boom and bucket |
| Traveling and Steering | Two levers with pedals |
| Engine Throttle | Electric, dial type |

| OPERATING WEIGHT (APPROXIMATE) | |
|---|--|
| Operating weight, including 7.06 m (23' 2") boom, 3.38 m (11' 1") arm, SAE heaped 2.2m ³ (2.88 yd ³) bucket, lubricant, coolant, full fuel tank, full hydraulic tank, and all standard equipments. | |

| OPERATING WEIGHT | | | |
|------------------|--------------|------------------|---------------------------|
| Shoes | | Operating Weight | Ground Pressure |
| Type | Width mm(in) | kg (lb) | kgf/cm ² (psi) |
| Triple Grouser | 700 (28") | 51,391 (113,295) | 0.77 (10.9) |
| | 800 (32") | 51,920 (114,460) | 0.68 (9.6) |

| SWING SYSTEM | |
|---------------------------|--------------------------|
| Swing Motor | Axial piston motor |
| Swing Reduction | Planetary gear reduction |
| Swing Bearing Lubrication | Grease-bathed |
| Swing Brake | Multi wet disc |
| Swing Speed | 9.0 rpm |

| COOLANT & LUBRICANT CAPACITY | | |
|-----------------------------------|-------|--------|
| | liter | US gal |
| Fuel Tank | 600 | 158.4 |
| Engine Coolant | 43 | 11.3 |
| Engine Oil | 34 | 9.0 |
| Swing Device | 7 | 1.8 |
| Final Drive (Each) | 13 | 3.4 |
| Hydraulic System (Including Tank) | 499 | 131.7 |
| Hydraulic Tank | 275 | 72.6 |
| Def/Adblue [®] | 70 | 18.4 |

| UNDERCARRIAGE | |
|--|--|
| The X-leg type center frame is integrally welded with reinforced box-section track frames. The undercarriage includes lubricated rollers, idlers, track adjusters with shock absorbing springs and sprockets, and a track chain with double or triple grouser shoes. | |

| Center Frame | X - Leg Type |
|------------------------------------|---------------------|
| Track Frame | Pentagonal Box Type |
| No. of Shoes on Each Side | 53 EA |
| No. of Carrier Roller on Each Side | 2 EA |
| No. of Track Roller on Each Side | 9 EA |
| No. of Rail Guard on Each Side | 2 EA |

| CAB NOISE LEVEL | |
|---|----------|
| Guaranteed noise level presented below can be differed depending on a range of factors such as operating condition, speed of a cooling fan, types of engine and so forth. Hearing protection shall be necessary if an operator is working in the improperly maintained cabin or exposed to a noisy environment by leaving doors and/or windows open. With cooling fan speed at maximum value: | |
| Operator sound pressure level (ISO 6396:2008) | 70 dB(A) |
| Exterior sound power level (ISO 6395:2008) | 98 dB(A) |
| * Distance of 15 m (49.2 ft), moving forward in second gear ratio | |

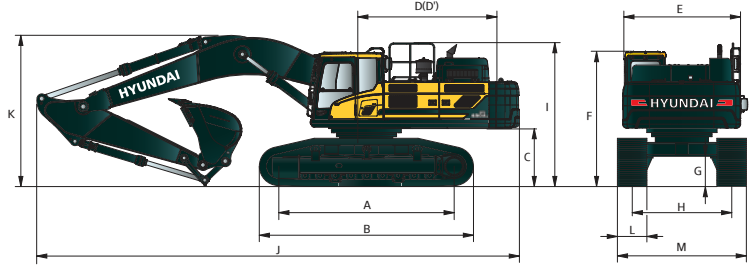
SPECIFICATIONS HX480AL

Powered By Cummins Performance Series Engine

HX480AL DIMENSIONS

Unit: mm (ft-in)

6.55 m (21' 6"), 7.06 m (23' 2"), 9.0 m (29' 6") boom and 2.4 m (7' 10"), 2.55 m (8' 4"), 2.9 m (9' 6"), 3.38 m (11' 1"), 4.0 m (13' 8"), 6.0 m (19' 8") arm



| | | |
|----|--|----------------|
| A | Tumbler distance | 4,470 (14' 8") |
| B | Overall length of crawler | 5,416 (17' 9") |
| *C | Ground clearance of counterweight | 1,295 (4' 3") |
| D | Tail-swing radius | 3,800 (12' 6") |
| D' | Rear-end length | 3,665 (12' 0") |
| E | Overall width of upper structure | 2,980 (9' 9") |
| *F | Overall height of cab | 3,240 (10' 8") |
| G | Min. ground clearance | 560 (1' 10") |
| H | Track gauge | 2,740 (9' 0") |
| *I | Overall Height of Guardrail w/ Grouser | |

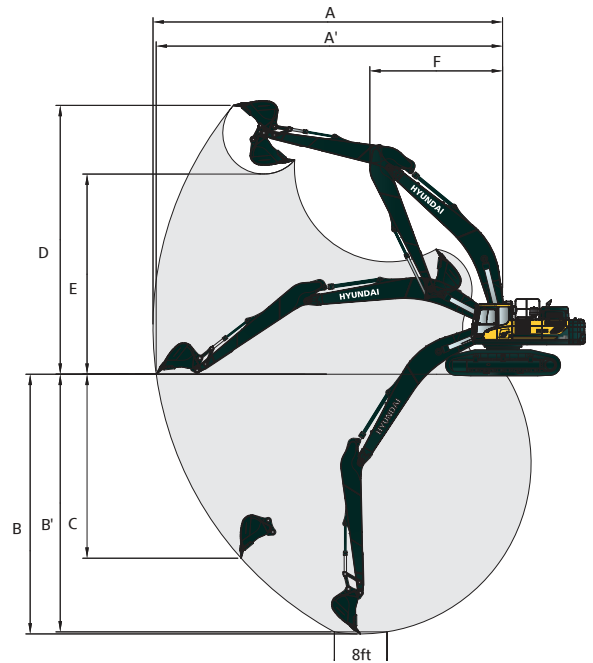
| | | | | | | | |
|---------------------------|-----------------|-----------------|-----------------|------------------|-----------------|-----------------|-----------------|
| Boom length | 6,550 (21' 6") | 7,060 (23' 2") | | | 9,000 (29' 6") | | |
| Arm length | 2,400 (7' 10") | 2,550 (8' 4") | 2,550 (8' 4") | 2,900 (9' 6") | 3,380 (11' 1") | 4,000 (13' 1") | 6,000 (19' 8") |
| J Overall length | 11,780 (38' 8") | 11,600 (38' 1") | 12,110 (39' 9") | 12,170 (39' 11") | 12,040 (39' 6") | 12,010 (39' 5") | 14,010 (46' 0") |
| *K Overall height of boom | 4,100 (13' 5") | 3,980 (13' 1") | 3,920 (12' 10") | 3,900 (12' 10") | 3,790 (12' 5") | 4,110 (13' 6") | 3,990 (13' 1") |
| L Track shoe width | 600 (24") | 700 (28") | 800 (32") | 900 (36") | | | |
| M Overall Width | 3,340 (11' 0") | 3,440 (11' 3") | 3,540 (11' 7") | 3,640 (11' 11") | | | |

* This figure includes the size of grousers.

HX480AL WORKING RANGE

Unit: mm (ft-in)

| | | | | | | | |
|------------------------------------|------------------|------------------|-----------------|------------------|------------------|------------------|-----------------|
| Boom length | 6,550 (21' 6") | | 7,060 (23' 2") | | | 9,000 (29' 6") | |
| Arm length | 2,400 (7' 10") | 2,550 (8' 4") | 2,550 (8' 4") | 2,900 (9' 6") | 3,380 (11' 1") | 4,000 (13' 1") | 6,000 (19' 8") |
| A Max. digging reach | 10,650 (34' 11") | 10,860 (35' 8") | 11,410 (37' 5") | 11,620 (38' 1") | 12,040 (39' 6") | 12,600 (41' 4") | 16,180 (53' 1") |
| A' Max. digging reach on ground | 10,430 (34' 3") | 10,640 (34' 11") | 11,200 (36' 9") | 11,410 (37' 5") | 11,840 (38' 10") | 12,410 (40' 9") | 16,030 (52' 7") |
| B Max. digging depth | 6,420 (21' 1") | 6,570 (21' 7") | 6,930 (22' 9") | 7,280 (23' 11") | 7,760 (25' 6") | 8,380 (27' 6") | 12,020 (39' 5") |
| B' Max. digging depth (8' level) | 6,240 (20' 6") | 6,400 (21' 0") | 6,760 (22' 2") | 7,120 (23' 4") | 7,620 (25' 0") | 8,250 (27' 1") | 11,920 (39' 1") |
| C Max. vertical wall digging depth | 4,510 (14' 10") | 5,550 (18' 3") | 5,720 (18' 9") | 5,800 (19' 0") | 5,920 (19' 5") | 6,470 (21' 3") | 8,510 (27' 11") |
| D Max. digging height | 10,170 (33' 4") | 10,580 (34' 9") | 11,110 (36' 5") | 10,930 (35' 10") | 11,030 (36' 2") | 11,260 (36' 11") | 12,610 (41' 4") |
| E Max. dumping height | 6,850 (22' 6") | 7,070 (23' 2") | 7,570 (24' 10") | 7,490 (24' 7") | 7,640 (25' 1") | 7,870 (25' 10") | 9,410 (30' 10") |
| F Min. swing radius | 4,730 (15' 6") | 4,550 (14' 11") | 4,780 (15' 8") | 4,890 (16' 1") | 4,770 (15' 8") | 4,630 (15' 2") | 6,040 (19' 10") |



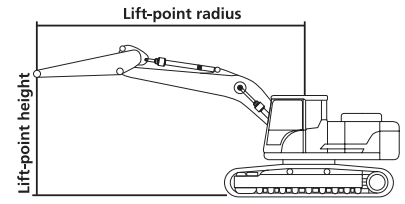
DIGGING FORCE

| | | | | | | | | | | |
|----------------------|--------|------------|-----------------|-----------------|-----------------|-----------------|-----------------|-----------------|----------------|------------------|
| Boom | Length | mm (ft.in) | 6,550 (21' 6") | | | 7,060 (23' 2") | | | 9,000 (29' 6") | []: Power Boost |
| | Weight | kg (lb) | 4,340 (9,570) | | | 4,370 (9,630) | | | 5,130 (11,310) | |
| Arm | Length | mm (ft.in) | 2,400 (7' 10") | 2,550 (8' 4") | 2,550 (8' 4") | 2,900 (9' 6") | 3,380 (11' 1") | 4,000 (13' 1") | 6,000 (19' 8") | |
| | Weight | kg (lb) | 2,390 (5,270) | 2,350 (5,180) | 2,350 (5,180) | 2,590 (5,710) | 2,630 (5,800) | 2,720 (6,000) | 3,290 (7,250) | |
| Bucket Digging Force | SAE | kN | 241.2 [263.2] | 211.8 [231.0] | 211.8 [231.0] | 211.8 [231.0] | 213.8 [233.2] | 215.7 [235.4] | 216.7 | |
| | | kgf | 24,600 [26,840] | 21,600 [23,560] | 21,600 [23,560] | 21,600 [23,560] | 21,800 [23,780] | 22,000 [24,000] | 22,100 | |
| | | lbf | 54,230 [59,170] | 47,620 [51,940] | 47,620 [51,940] | 47,620 [51,940] | 48,060 [52,430] | 48,500 [52,910] | 48,720 | |
| | ISO | kN | 280.5 [306.0] | 246.2 [268.5] | 246.2 [268.5] | 246.2 [268.5] | 248.1 [270.7] | 250.1 [272.8] | 252.0 | |
| | | kgf | 28,600 [31,200] | 25,100 [27,380] | 25,100 [27,380] | 25,100 [27,380] | 25,300 [27,600] | 25,500 [27,820] | 25,700 | |
| | | lbf | 63,050 [68,780] | 55,340 [60,360] | 55,340 [60,360] | 55,340 [60,360] | 55,780 [60,850] | 56,220 [61,330] | 56,660 | |
| Arm Crowd Force | SAE | kN | 274.6 [299.6] | 232.7 [253.9] | 232.7 [253.9] | 220.7 [240.8] | 191.2 [208.6] | 170.6 [186.1] | 121.6 | |
| | | kgf | 28,000 [30,550] | 23,730 [25,890] | 23,730 [25,890] | 22,500 [24,550] | 19,500 [21,270] | 17,400 [18,980] | 12,400 | |
| | | lbf | 61,730 [67,350] | 52,320 [57,080] | 52,320 [57,080] | 49,600 [54,120] | 42,990 [46,890] | 38,360 [41,840] | 27,340 | |
| | ISO | kN | 287.3 [313.4] | 243.2 [265.3] | 243.2 [265.3] | 229.5 [250.4] | 198.1 [216.1] | 176.5 [192.6] | 124.5 | |
| | | kgf | 29,300 [31,960] | 24,800 [27,050] | 24,800 [27,050] | 23,400 [25,530] | 20,200 [22,040] | 18,000 [19,640] | 12,700 | |
| | | lbf | 64,600 [70,460] | 54,670 [59,630] | 54,670 [59,630] | 51,590 [56,280] | 44,530 [48,590] | 39,680 [43,300] | 28,000 | |

Note : Boom weight includes arm cylinder, piping, and pin Arm weight includes bucket cylinder, linkage, and pin

SPECIFICATIONS HX480AL

Powered By Cummins Performance Series Engine



Lifting Capacity

Boom: 7,060 mm (23' 2")

Arm: 3,380 mm (11' 1")

Bucket: 2.2 m³ (2.88 yd³) SAE heaped

Shoe 800 mm (31") triple grouser, CWT 9,700 kg (21,385 lb)

Capacities based on North American Standard Configuration in accordance with ISO condition 2 standard.

Rating over front

Rating over side or 360 degree

| Lift-point height m (ft) | | | | | | | | | | | | At max. reach | | |
|-----------------------------|----|----------------|--------|-----------------|--------|-----------------|--------|-----------------|--------|-----------------|-------|---------------|--------|--------|
| | | 3.0 m (9.8 ft) | | 4.5 m (14.8 ft) | | 6.0 m (19.7 ft) | | 7.5 m (24.6 ft) | | 9.0 m (29.5 ft) | | Capacity | | Reach |
| | | | | | | | | | | | | | | m (ft) |
| 9.0 m | kg | | | | | | | | | | | *7670 | *7670 | 7.44 |
| 29.5 ft | lb | | | | | | | | | | | *16910 | *16910 | (24.4) |
| 7.5 m | kg | | | | | *10410 | *10410 | | | | | *7250 | *7250 | 8.60 |
| 24.6 ft | lb | | | | | *22950 | *22950 | | | | | *15980 | *15980 | (28.2) |
| 6.0 m | kg | | | | | *10910 | *10910 | *9970 | 8490 | | | *7160 | *7160 | 9.38 |
| 19.7 ft | lb | | | | | *24050 | *24050 | *21980 | 18720 | | | *15790 | *15790 | (30.8) |
| 4.5 m | kg | | | *18520 | *18520 | *14070 | *14070 | *11770 | 11020 | *10400 | 8310 | *7280 | 7150 | 9.86 |
| 14.8 ft | lb | | | *40830 | *40830 | *31020 | *31020 | *25950 | 24290 | *22930 | 18320 | *16050 | 15760 | (32.4) |
| 3.0 m | kg | | | *22310 | 21880 | *15900 | 14520 | *12730 | 10550 | *10860 | 8060 | *7610 | 6740 | 10.10 |
| 9.8 ft | lb | | | *49190 | 48240 | *35050 | 32010 | *28060 | 23260 | *23940 | 17770 | *16780 | 14860 | (33.1) |
| 1.5 m | kg | | | *16400 | *16400 | *17220 | 13810 | *13510 | 10140 | *11240 | 7830 | *8180 | 6600 | 10.11 |
| 4.9 ft | lb | | | *36160 | *36160 | *37960 | 30450 | *29780 | 22350 | *24780 | 17260 | *18030 | 14550 | (33.2) |
| Ground Line | kg | | | *18730 | *18730 | *17690 | 13390 | *13860 | 9850 | *11330 | 7660 | *9100 | 6710 | 9.90 |
| | lb | | | *41290 | *41290 | *39000 | 29520 | *30560 | 21720 | *24980 | 16890 | *20060 | 14790 | (32.5) |
| -1.5 m | kg | *13500 | *13500 | *22500 | 20300 | *17250 | 13230 | *13600 | 9710 | *10900 | 7590 | *10130 | 7140 | 9.43 |
| -4.9 ft | lb | *29760 | *29760 | *49600 | 44750 | *38030 | 29170 | *29980 | 21410 | *24030 | 16730 | *22330 | 15740 | (31.0) |
| -3.0 m | kg | *21470 | *21470 | *20180 | *20180 | *15850 | 13270 | *12490 | 9730 | | | *10050 | 8030 | 8.69 |
| -9.8 ft | lb | *47330 | *47330 | *44490 | *44490 | *34940 | 29260 | *27540 | 21450 | | | *22160 | 17700 | (28.5) |
| -4.5 m | kg | *20180 | *20180 | *16530 | *16530 | *13150 | *13150 | *9790 | *9790 | | | *9580 | *9580 | 7.58 |
| -14.8 ft | lb | *44490 | *44490 | *36440 | *36440 | *28990 | *28990 | *21580 | *21580 | | | *21120 | *21120 | (24.9) |

NOTES:

- Lifting capacities are based on ISO 10567.
- Lifting capacity of the HX Series does not exceed 75% of tipping load with the machine on firm, level ground or 87% of full hydraulic capacity.
- The Lift-point is bucket pivot mounting pin on the arm (without bucket mass).
- (*) indicates load limited by hydraulic capacity.



| HYDRAULIC SYSTEM | STD | OPT |
|------------------|-----|-----|
|------------------|-----|-----|

| INTELLIGENT POWER CONTROL (IPC) | | |
|--------------------------------------|---|--|
| 3-Power Mode, 2-Work Mode, User Mode | ● | |
| Variable Power Control | ● | |
| Pump Flow Control (Upgraded IPC) | ● | |
| Attachment Mode Flow Control | ● | |
| Engine Auto Idle | ● | |
| Engine Auto Shutdown Control | ● | |

| CAB & INTERIOR | STD | OPT |
|----------------|-----|-----|
|----------------|-----|-----|

| ISO STANDARD CABIN | | |
|--|---|---|
| Cabin Lights (LED) | | ● |
| Cabin Front Window Rain Guard | | ● |
| Cabin Roof-Steel Cover | | ● |
| Rise-Up Type Windshield Wiper | ● | |
| Radio / USB Player | ● | |
| Handsfree Mobile Phone System with USB | ● | |
| 12 V Power Outlet (24 V DC to 12 V DC Converter) | ● | |
| Electric Horn | ● | |
| All-Weather Steel Cab with 360° Visibility | ● | |
| Safety glass - Tempered glass | ● | |
| Safety glass - Tempered glass with front laminated glass | | ● |
| Sliding Fold-In Front Window | ● | |
| Sliding Side Window (LH) | ● | |
| Lockable Door | ● | |
| Hot & Cool Box | ● | |
| Storage Compartment & Ashtray | ● | |
| Transparent Cabin Roof-Cover | ● | |
| Sun Visor | ● | |
| Door and Cab Locks, One Key | ● | |
| Mechanical Suspension Seat With Heater | ● | |
| Pilot-Operated Slidable Joystick | ● | |
| Console Box Height Adjust System | ● | |

| AUTOMATIC CLIMATE CONTROL | | |
|---------------------------|--|--|
|---------------------------|--|--|

| | | |
|--------------------------|---|--|
| Air Conditioner & Heater | ● | |
| Defroster | ● | |

| AUTOMATIC STARTING AID(AIR GRID HEATER) FOR WEATHER | | |
|---|--|--|
|---|--|--|

| | | |
|---|---|--|
| Starting Aid (Air Grid Heater) for Cold Weather | ● | |
|---|---|--|

| CENTRALIZED MONITORING | | |
|------------------------|--|--|
|------------------------|--|--|

| | | |
|------------------------------------|---|---|
| 8" LCD Display | ● | |
| Engine Speed or Trip Meter / Accel | ● | |
| Engine Coolant Temperature Gauge | ● | |
| Max Power | ● | |
| Low Speed / High Speed | ● | |
| Auto Idle | ● | |
| Overload warning with alarm | | ● |
| Check Engine | ● | |
| Air Cleaner Clogging | ● | |
| Indicators | ● | |
| Eco Gauges | ● | |
| Fuel Level Gauge | ● | |
| Hyd. Oil Temperature Gauge | ● | |
| Fuel Warmer | ● | |
| Warnings | ● | |
| Communication Error | ● | |
| Low Battery | ● | |
| Clock | ● | |

| SEAT | | |
|------|--|--|
|------|--|--|

| | | |
|--|---|---|
| Mechanical Suspension without Heater | | ● |
| Mechanical Suspension with Heater | | ● |
| Adjustable Air Suspension without Heater | | ● |
| Adjustable Air Suspension with Heater | ● | |

| CABIN FOG (ISO 1,0262) LEVEL 2 | | |
|--------------------------------|--|--|
|--------------------------------|--|--|

| | | |
|----------------------------|--------------------|---|
| FOG (Falling Object Guard) | Front & Tops Guard | ● |
| | Top Guard | ● |

| CABIN ROPS (ISO 1,2117-2) | | |
|---------------------------|--|--|
|---------------------------|--|--|

| | | |
|--|---|--|
| ROPS (Roll Over Protective Structures) | ● | |
|--|---|--|

| SAFETY | STD | OPT |
|--------|-----|-----|
|--------|-----|-----|

| | | |
|---|---|---|
| Battery Master Switch | ● | |
| Rearview Camera | ● | |
| AAVM (Advanced Around View Monitoring) | | ● |
| Six Front Working Lights (4 Boom Mounted, 2 Front Frame Mounted) | ● | |
| Travel Alarm | ● | |
| Rear Work | | ● |
| Beacon Lamp | | ● |
| Automatic Swing Brake | ● | |
| Boom Holding System | ● | |
| Arm Holding System | ● | |
| Safety Lock Valve for Boom Cylinder with Overload Warning Device | | ● |
| Safety Lock Valve for Arm Cylinder | | ● |
| Swing Lock System | | ● |
| Two Outside Rearview Mirror | ● | |

| OTHERS | STD | OPT |
|--------|-----|-----|
|--------|-----|-----|

| | | |
|--|---|---|
| Removable Clean-Out Dust Net for Cooler | ● | |
| Removable Washer Tank | ● | |
| Fuel Pre-Filter(1,000hr) | ● | |
| Fuel Warmer | ● | |
| Self-Diagnostics System | ● | |
| Hi-Mate (Remote Management System) | ● | |
| Batteries (2 x 12 V x 160 AH) | ● | |
| Fuel Filler Pump (50 l/min) | | ● |
| Single-Acting Piping Kit (Breaker, etc.) | | ● |
| Double-Acting Piping Kit (Clamshell, etc.) | ● | |
| Rotating Piping Kit | | ● |
| Quick Coupler Piping | ● | |
| Quick Coupler | | ● |
| Boom Floating Control | | ● |
| One Pedal Straight Travel System | | ● |
| Accumulator for Lowering Work Equipment | ● | |
| Pattern Change Valve (2 Patterns) | ● | |
| Tool Kit | | ● |

| BOOMS | | |
|-------|--|--|
|-------|--|--|

| | | |
|----------------|---|---|
| 6.15 m, 20' 2" | | ● |
| 7.06 m, 23' 2" | ● | |

| ARMS | | |
|------|--|--|
|------|--|--|

| | | |
|----------------|---|---|
| 2.5 m, 8' 2" | | ● |
| 3.38 m, 11' 1" | ● | |
| 3.9 m, 12' 10" | | ● |

| UNDERCARRIAGE | STD | OPT |
|---------------|-----|-----|
|---------------|-----|-----|

| | | |
|--------------------------------------|---|---|
| Lower Frame Under Cover (Additional) | | ● |
| Lower Frame Under Cover (Normal) | ● | |

| TRACK SHOES | | |
|-------------|--|--|
|-------------|--|--|

| | | |
|-------------------------------------|---|---|
| Triple Grousers Shoes (600 mm, 24") | | ● |
| Triple Grousers Shoe (700 mm, 28") | | ● |
| Triple Grousers Shoe (800 mm, 32") | ● | |
| Triple Grousers Shoe (900 mm, 36") | | ● |
| Double Grousers Shoe (600 mm, 24") | | ● |
| Track Rail Guard | ● | |
| Full Track Rail Guard | | ● |

* Standard and optional equipment may vary. Contact your Hyundai dealer for more information.
The machine may vary according to International standards.

* The photos may include attachments and optional equipment that are not available in your area.

* Materials and specifications are subject to change without advance notice.

* All imperial measurements rounded off to the nearest pound or inch.



www.hceamericas.com
6100 Atlantic Blvd., Norcross, GA 30071
TEL (678) 823-7777 FAX (678) 823-7778

PLEASE CONTACT