



CP85

COMMERCIAL CLASS PAVER



CP85

Engine	74hp (55kW) CAT® Tier IVF
Std. Width	8'-15' (2.43-4.59m)
Max Width	17' (5.18m)
Weight	19,750 lbs (8958kg)

OVERVIEW

Built like a highway-class paver. Made for the commercial-class contractor. Combining proven design with increased torque and efficiency, the CP85 is the ideal platform for small to large-scale commercial paving projects. Utilizing heavy-duty, fully replaceable highway-class wear components, an intuitive, contractor focused platform and the renowned Ezc815 electrically heated screed, the CP85 delivers big results in a small paver.

Featuring a powerful, high torque 74hp Tier IV Final engine (No DEF), the CP85 meets and exceeds the demands of contractors. The platform's versatility, along with its low profile, enables the paver to be utilized in size restrictive areas, such as parking garages, while having the performance and contractor-focus for large scale parking lot or municipal road applications.

Highway-Class Build And Performance In A Commercial-Class Paver Platform





CP85

2-Man Option Shown



Unmatched Performance with its powerful, high torque CAT® 3.4B Tier IV Final engine (no DEF), one piece heavy-duty frame, highway-class wear components and a fully rebuildable, long lasting platform.

Unequaled Contractor Focus with its low sloping hood for optimal visibility, dual control towers able to tilt down 40° and swing out 30°, multiple platform configurations and the most standard crew comfort features in its class.

Unparalleled Mat Quality with its renowned EZC815 electrically heated screed, engineered and built with over 30 years of award winning highway-class know-how and performance including full length element hold downs, innovative deck cone leveling and spring loaded endgates.

FEATURES & BENEFITS

Commercial pavers are not built or designed the same. The CP85 distinguishes itself from pavers in its class through its leading heavy-duty frame, balanced design and contractor focus. From the ground up, no other commercial paver is built like a Carlson CP85.



3-Man Option Shown

1 Heavy-Duty Steel Frame

For the CP85, it all starts with the frame. Constructed of cold-rolled steel, the CP85's single piece frame provides contractors with a longer lasting, higher quality chassis, making it the most robust platform in its class. And since all the pavers wear components and add-ons are bolted to the frame, the CP85 is able to be fully rebuildable around the heavy-duty frame for even longer service life.

2 Power And Performance

Proven reliability, high efficiency and impressive power are delivered from the 74 horsepower (55kW) Caterpillar® 3.4B Tier IV Final (no DEF) turbocharged engine, coupled with load-sense hydraulics and heavy-duty 2 speed, triple reduction planetaries. Producing increased torque compared to forerunner models, the CP85 is able to push highway class asphalt trailers while producing minimal noise for work in noise sensitive areas.

Maintenance on and around the engine is made accessible with Carlson's leading engine compartment layout. With a one piece, forward tilting hood, largest side doors in its class, and front access panel in the hopper, service to the CP85's engine, hydraulics and electrical can be done quickly and comfortably for greater productivity and less machine downtime.

3 Track System

Comprising of 6 bogeys, the largest drive sprockets in its class and 12" (305mm) wide poly-pad tracks that provide exceptional lifecycle and performance, the CP85's track system gives contractors a robust, heavy-duty system that excels across a wide variety of bases and materials. Hydraulically self-tensioning, the CP85's track system also comes standard with rock guards, giving the already robust platform added protection.

4 Dual Adjustable Control Towers

Designed to maximize comfort, organization and visibility, the CP85 comes standard with dual control towers enabling full control of paver and screed functions from either side. Able to pivot outwards by 30° and downwards 40°, the CP85's controls can be easily adjusted to match the needs of the operator in both the 2-man and 3-man configurations. Each console comes standard with intuitively organized switch functions, direct connect steering levers, and remote holders.



The layout of the engine, hydraulics and electrical, along with its forward-tilting hood and large side doors, make service and maintenance easy and accessible.

The placement of the controls enables class-leading operator visibility around the machine, as well as to the augers and screed for close monitoring of material flow and head of material.



MATERIAL DISTRIBUTION

Truly defining the CP85 is its heavy-duty material distribution system, built from the ground up to outlast and outperform any paver in its class. Combining robust reliability with industry leading features, the CP85's material distribution system elevates paving performance, reduces replacement costs and decreases clean-up times.



**Highway-Class Components
For Leading Performance**

Hopper And Conveyors

The keystone to the CP85's leading reliability and heavy-duty build is the hopper and material distribution system. Featuring chains and slats 25% stronger than competitive pavers, the largest conveyor sprockets in their class, and easily accessible conveyor tension adjustment points, the CP85's 8.5 ton hopper efficiently moves material while giving operators longer wear component lifecycle. Even the CP85's hopper wings are the most robust in their class, constructed of ½" steel, while the heavy-duty lift cylinders provide the highest lift angles in their class for even greater material flow.

Clean up of the hopper and conveyors is reduced by the system's design and accessibility. With its between the tracks design that drastically reduces material carry over and flip up front apron for washdown of the conveyor chains and sprockets, the CP85 gives contractors a longer lasting platform combined with unrivaled ease of clean up.



Heavy-Duty Floor Plates

Like all Carlson commercial-class pavers, the CP85 utilizes 3/8" (9.5mm) heavy-duty, 450 Brinell-rated hardened steel floor plates for longer lifecycle and better performance. These class-leading floor plates are also fully replaceable, enabling contractors to rebuild their machine for even longer machine lifecycle and greater return on investment.

Auger Flights And Bearings

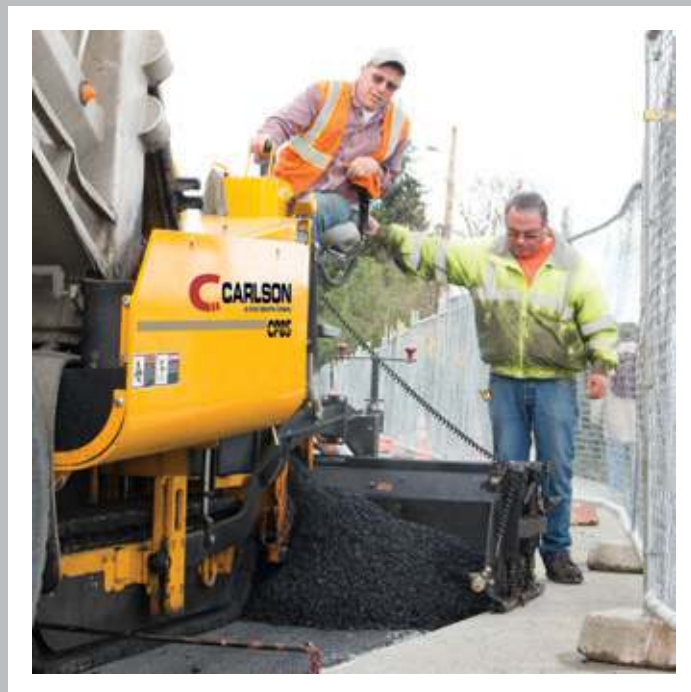
The CP85's fully replaceable 12" (305mm) 500 Brinell-rated steel auger flights provide best-in-class material flow towards the endgates while also ensuring leading component lifecycle. Held in place by the heaviest duty, fully sealed bearing in its class, the CP85's augers are truly highway-class for higher production and lower maintenance costs.

Horizontal Sliding Damper Doors

A Carlson exclusive feature, the horizontal sliding damper doors on the CP85 keep obstructions, such as utility boxes, from damaging them while open. Able to be infinitely adjusted from fully open to closed, contractors are able to utilize the doors' tunnel effect for wider width paving or for narrow width applications, such as utility cuts. The horizontally sliding doors also prevent material from falling when traveling across the jobsite to the next pull.

Automation And Sonics

For more even head of material at any width, the CP85 is available with sonic augers and hydraulic tow point that automatically adjust the material flow for better mat quality. The CP85 is also prewired as standard to accept grade and slope automation systems, including those sold by MOBA®, Topcon® and TF Technologies®.



SCREED

Amongst commercial-class pavers, it is only Carlson's CP platforms that carry a Carlson screed. Engineered and built with over 30 years of industry-leading front-mount screed know-how, Carlson's EZC815 screeds deliver unparalleled mat quality and unmatched performance across a wide array of paving applications.



Award Winning Highway-Class Mat Quality In A Commercial-Class Screed

Highway-Class Features

Just like its highway-class screeds, renowned for their award-winning mat quality, Carlson has built in many of its industry-leading innovations and technology into the EZC815 commercial screed. Standard with state-of-the-art electric heating elements for clean, even heat across the main and extension plates, the EZC815 also incorporates with each element a full length hold down for better heat transfer to the plate. Add in the spring loaded endgates, innovative screed deck cone system for easy leveling, manual extension height, and crown adjustment, the EZC815 has the most standard screed features in its class.

Screed Plates

Built with the Carlson class exclusive 2% taper, a feature that improves outboard flow of material regardless if the augers are on, the EZC815 screed utilizes a 16" (406mm) deep main screed plate and 8" (203mm) deep extension plates. Each plate is made of 3/8" (9.5mm) 450 Brinell-rated hardened steel, giving contractors leading plate lifecycle and unparalleled mat quality. The EZC815 also has class leading adjustable pre-strike offs tightly fitted to the main, a feature that allows little to no damage to occur when obstructions are bumped or hit due to poor elevation.



Options For Customization

Contractors are able to add enhanced versatility and customizability to their EZC815 screed through an array of class-leading attachments and functions. Able to be added anytime, contractors can tailor their screed to the demands and requirements of any job including:

- The Carlson Safety Edge endgate produces seamless, extruded 30° mat edges that eliminate the need for hand tamping. Standard with heat, the Carlson Safety Edge is able to be adjusted from 30° to joint matching with its integrated, externally mounted jack.
- The 12" (305mm) and 18" (457mm) Integral Berm option enables contractors to construct a seamless 4" (102mm) outside edge rise berm curb through quick manual adjustments.
- Power Crown can be easily added to the EZC815's crown assembly, giving contractors the ability to hydraulically adjust the screed from 3" (76mm) crown to 1" (25mm) invert.

EZC815

Extensions

Providing optimal rigidity at wide widths, the EZC815's extensions feature 2" (51mm) heavy-duty chrome rods with adjustable slide track bushings, limiting movement in the extensions and reducing component wear. Each extension of the EZC815 has externally accessible angle of attack adjustments that can be adjusted on the fly.

These features, and the ability of contractors to easily level the screed, give the platform longer lifecycle and ensure leading mat quality in a commercial class screed.



OPTIONS & SPECS



**Customized To Fit
Contractor Needs**

With its ability to be customized to the needs of the contractor, the CP85 is available with a wide array of options and attachments that elevate performance, comfort and visibility of the paver platform. Ranging from paving performance to operator comfort, all of the CP85's options are able to be easily bolted on allowing contractors to add versatility and ability when needed. Simply put, no other paver in its class can match the customizability of the CP85.



PERFORMANCE

- 8 LED Flood Light Package
- High Output Light Package
- Hydraulic Tow Points
- Truck Hitch
- 12" Bolt-on Auger Extensions
- Tunnel Kit
- Auger/Conveyor Reverse



CONTRACTOR FOCUS

- Umbrella
- Beacon Light
- LH and RH Seats
- Slide Out Walkway Extensions
- 2nd Washdown Hose Reel
- Citrus Washdown Tank
- 12v Aux. Charger Kit
- Auxiliary Light Mount
- Spanish Decal Kit

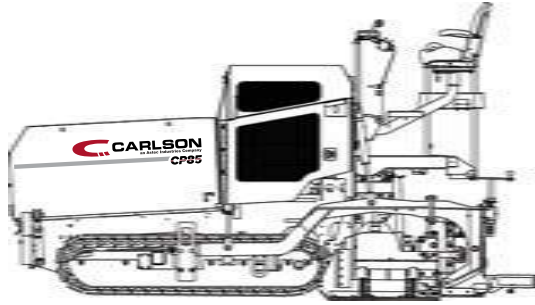


MAT QUALITY

- Depth Crank Indicator Kit
- Heated Endgate Kit
- Choice of Depth Crank Thread
- Cut Off Shoes
- 12" Heated Bolt-on Extensions
- Carlson Safety Edge
- Integral Berm (12" or 18")
- Power Crown

3-Man Option Shown

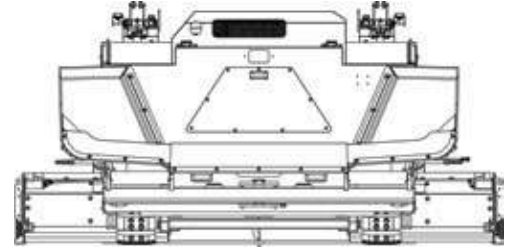
94 in (2387mm)



68 in (1727mm)

86 in (2184mm)

166 in (4216mm)



75 in (1905mm)

2-Man Option Shown

87 in (2209mm)

95 in (2413mm)

122 in (3098mm)

DIMENSIONS

Total Weight	19,750 lb (8958kg)
Tractor Weight	16,500 lb (6350kg)
Screed Weight	3,250 lb (1474kg)
Hopper Capacity	8.5 Tons (7.7 tonnes)
Hopper Inside Width Opening	10 ft (305cm)
Hopper Dump Clearance	27 in (686mm)
Load Angles	15° Forward/15° Reverse

COMPONENTS

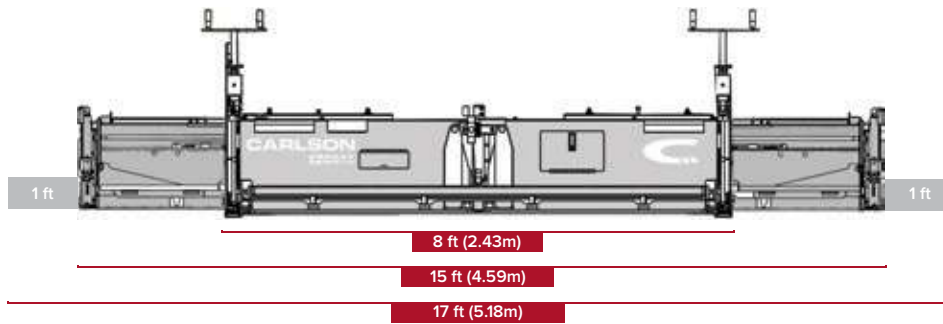
Floor Plate Thickness	3/8 in (9.5mm) 450 Brinell-rated
Conveyor Width	26 in (660mm)
Damper Doors	Dual Horizontally Sliding
Auger Diameter	12 in (305mm)
Auger Flight Thickness	7/8 in (22mm) 500 Brinell-rated
Max. Auger Speed	120 rpm

ENGINE

Engine	74hp (55kW) CAT® 3.4B
EPA/EU Emissions Standard	Tier IV Final (No DEF)
Drive System	2 Speed Planetary
Track Type (Standard)	12" (305mm) Poly-Pad
Max. Pave Speed	100 fpm (30.5m/min)
Max. Travel Speed	200 fpm (60.9m/min)
Max. Reverse Speed	200 fpm (60.9m/min)

CAPACITIES

Fuel Tank	30 gal (113.6L)
Hydraulic Tank	45 gal (170.3L)
Cooling System Capacity	11 qts (10.4L)
Washdown Tank (Optional)	10 gal (37.9L)
Electrical System	12v w/ 80 amp Alternator
Generator	14.4kW Belt Driven



EZC815 SCREED

Standard Paving Width	8 ft-15 ft (2.43-4.59m)
Max. Paving Width	17 ft (5.18m)
Paving Depth (Min/Max)	.25-8 in (6mm-203mm)
Main Plate Depth	16 in (406mm) Center 14 in (356mm) Edge
Main Plate Thickness	3/8 in (9.5mm) 450 Brinell Rated
Extension Plate Depth	8 in (203mm)
Extension Plate Thickness	3/8 in (9.5mm) 450 Brinell Rated

Screed Heat Source	Electric Heating Elements
Endgates	Spring Loaded
Crown Adjustment	Manual Adjustment
Crown/Invert	3 in (76mm) / 1 in (25mm)
Extension Height Adjustment	Manual Adjustment
Vibration	0-3000 vpm

01-1019

CP85



CARLSONPAVINGPRODUCTS.COM

Continually improving our products, Carlson reserves the right to amend materials and specifications without notice. Featured machines and photos may include optional or prototype equipment. 2017 Carlson.

